



Vessel name	Built	IMO no.	Flag	Vessel name	Built	IMO no.	Flag
BBC Nordland	2000	9210282	Gibraltar	BBC Northsea	2000	9210311	Antigua & Barbuda

MAIN DATA

Vessel type	Multipurpose Tweendecker
Classification	GL + 100 A5 E3 G IW + MC E3 AUT strengthened for heavy cargoes, equipped for the carriage of containers, equipped for the carriage of dangerous goods
GT/NT	6,204 / 2,900
Deadweight (summer)	7,650 mt
Max. draft (summer)	7.50 m
Length o.a.	107.75 m
Breadth moulded	18.20 m
Depth to main deck	10.10 m
Height above keel	37.70 m
Speed	13.5 knots
Fuel consumption	17.5 mt RMG 380 fuel per day at sea 1.0 mt MGO DMA per day in port without gear 3.0 mt MGO DMA per day in port with gear

HOLDS/HATCHES/CRANES

Cargo hold capacity	10,401 cbm / 367,306 cbft
Floor space under deck	1,666 sqm / 17,932 sqft
Floor space on deck	996 sqm / 10,720 sqft
Cranes	2 NMF cranes situated portside 80 mt capacity each / 160 mt capacity combined
Container intake	374 TEU nominal 246 TEU at 14 mt homogeneously loaded 18 reefer plugs on deck
Deck strengths per sqm	20.00 mt on tanktop 2.50 mt on tweendeck 1.75 mt on hatchcovers

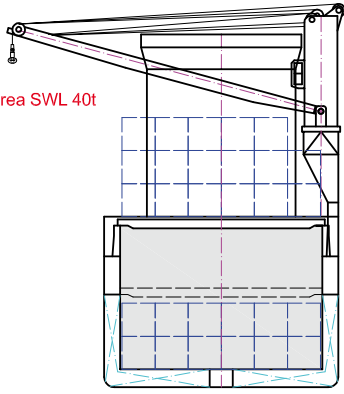
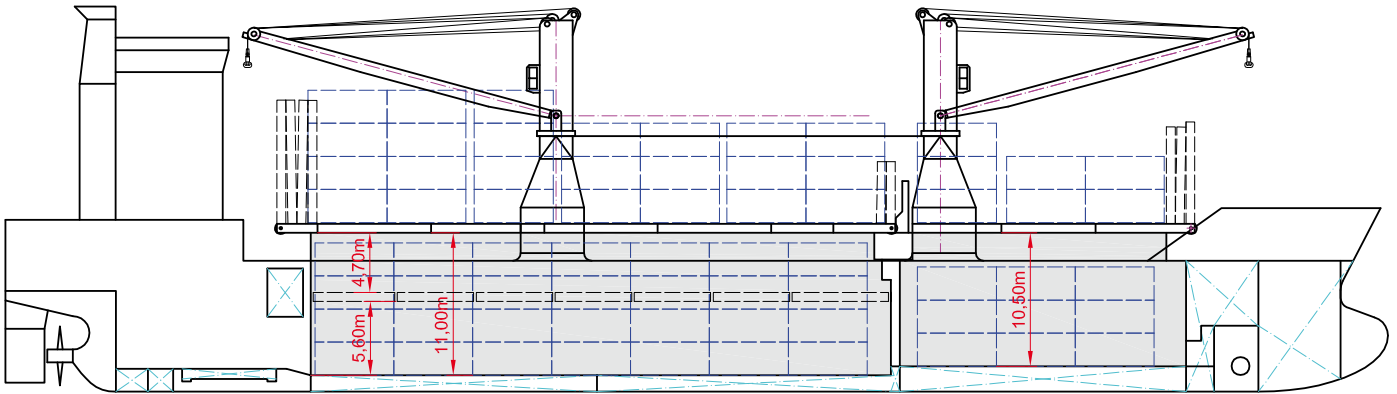
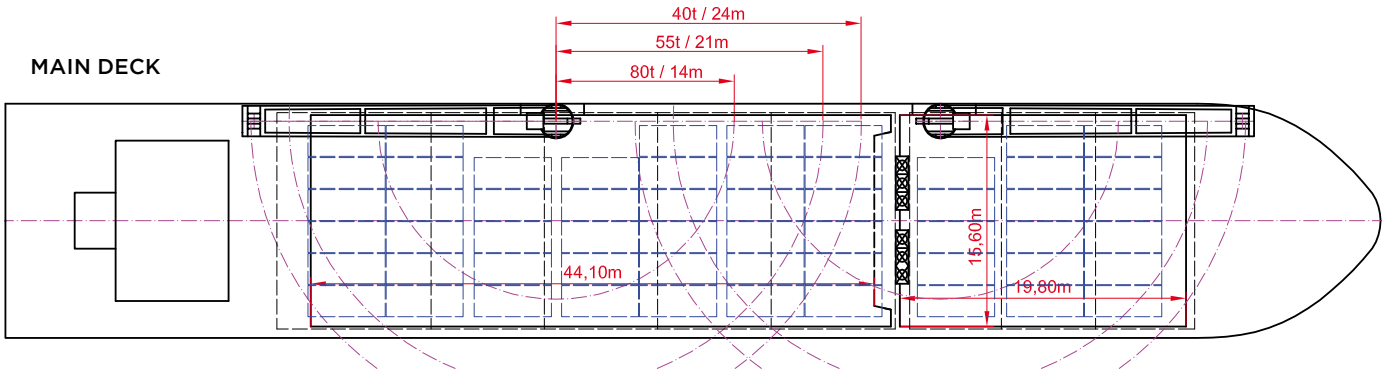
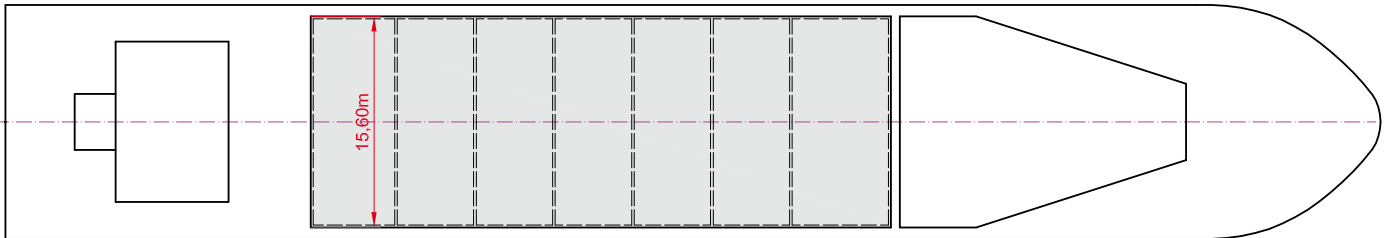
>>> see reverse side for further info/details

SPECIAL EQUIPMENT/FEATURES

Fitted for trading Great Lakes and Australia.
Fitted for carriage of dangerous goods of all IMO classes.
Pipe rack in hold number one.

Speed and consumption figures are calculated basis maximum Beaufort 2, no swell and no adverse currents. Consumption data assumes shaft generator and reefer plugs disconnected. Vessel is burning fuels according to ISO 8217-2005. Intake is always subject to vessel's stability, trim, permissible weights and is subject to regulations of visibility. Lifting capacity of vessel's cranes is subject to vessel's stability and can depend on cargo/ballast on board. Container data as well as bale capacity assumes tweendeck ashore. All details including speed and consumption are given in good faith and are „about“ and are given without guarantee. They must not be used as basis for charterparties or contracts without BBC's explicit written authority.

Crane working area SWL 40t


SIDE VIEW

MAIN DECK

TWENDECK

HOLDS & DOUBLE BOTTOM
