



Vessel name	Built	IMO no.	Flag	Vessel name	Built	IMO no.	Flag
BBC Leer	1998	9161168	Liberia	BBC Rheiderland	2000	9202041	Liberia
BBC Ostfriesland	1999	9161182	Liberia				

MAIN DATA

Vessel type	Multipurpose Singledecker / Containercarrier
Classification	GL + 100 A5 IW G + MC AUT GL + 100 A5 E3 + MC E3 AUT (BBC Rheiderland) strengthened for heavy cargoes, equipped for the carriage of containers, equipped for the carriage of dangerous goods
GT/NT	13,066 / 6,914
Deadweight (summer)	20,567 mt (BBC Leer) 20,567 mt (BBC Ostfriesland) 20,144 mt (BBC Rheiderland)
Max. draft (summer)	9.75 m
Length o.a.	153.20 m
Breadth moulded	23.60 m
Depth to main deck	13.50 m
Height above keel	45.24 m
Speed	15.0 knots
Fuel consumption	28.0 mt RMG 380 fuel per day at sea 2.5 mt RMG 380 fuel per day in port without gear 3.5 mt RMG 380 fuel per day in port with gear

HOLDS/HATCHES/CRANES

Cargo hold capacity	24,982 cbm / 882,249 cbft
Floor space under deck	1,849 sqm / 19,908 sqft
Floor space on deck	1,766 sqm / 19,009 sqft
Cranes	2 Mac Gregor-Hägglund cranes situated portside 60 mt capacity each / 120 mt capacity combined
Container intake	1300 TEU nominal 959 TEU at 14 mt homogeneously loaded 63 reefer plugs on deck
Deck strengths per sqm	21.00 mt on tanktop in holds 1 and 2 15.00 mt on tanktop in holds 3, 4 and 5 1.60 mt on hatchcovers

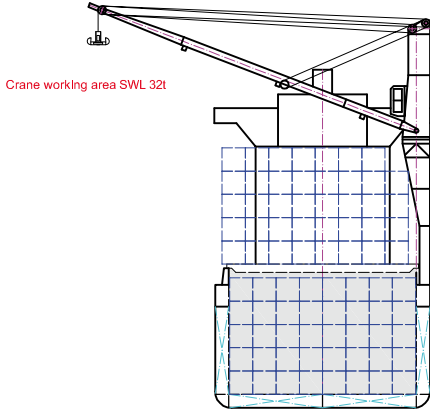
>>> see reverse side for further info/details

SPECIAL EQUIPMENT/FEATURES

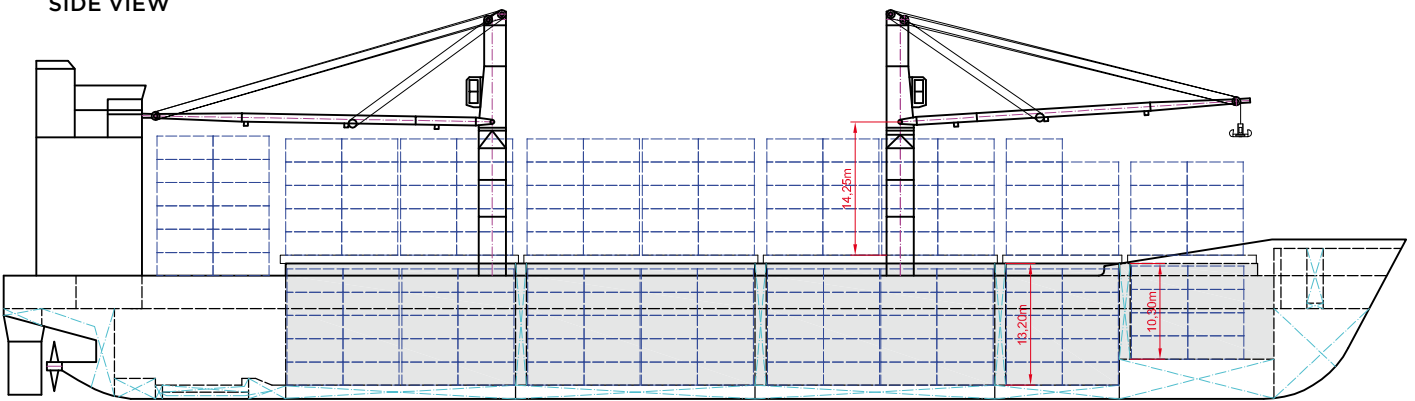
Fitted for trading Australia.
Fitted for carriage of dangerous goods of all IMO classes.
Suitable for pure container trade (vessel is equipped with container supporting frames).

Speed and consumption figures are calculated basis maximum Beaufort 2, no swell and no adverse currents. Consumption data assumes shaft generator and reefer plugs disconnected. Vessel is burning fuels according to ISO 8217-2005. Intake is always subject to vessel's stability, trim, permissible weights and is subject to regulations of visibility. Lifting capacity of vessel's cranes is subject to vessel's stability and can depend on cargo/ballast on board. Container data as well as bale capacity assumes tweendeck ashore. All details including speed and consumption are given in good faith and are „about“ and are given without guarantee. They must not be used as basis for charterparties or contracts without BBC's explicit written authority.

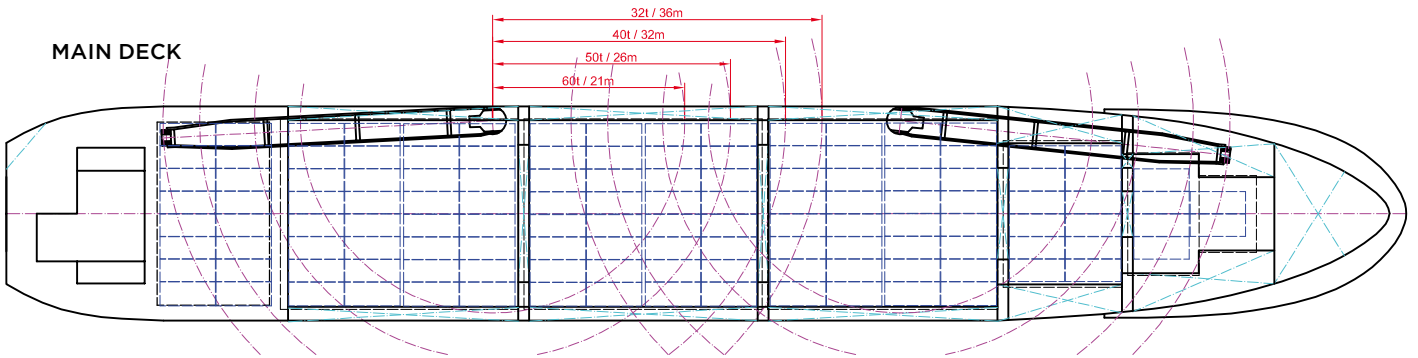
BBC Leer BBC Rheiderland
 BBC Ostfriesland



SIDE VIEW



MAIN DECK



HOLDS & DOUBLE BOTTOM

