



Vessel name	Built	IMO no.	Flag	Vessel name	Built	IMO no.	Flag
BBC Langeland	1998	8912912	Antigua & Barbuda				

## MAIN DATA

<b>Vessel type</b>	Multipurpose Tweendecker
<b>Classification</b>	GL + 100 A5 E3 G + MCE3 AUT strengthened for heavy cargoes, equipped for the carriage of containers, equipped for the carriage of dangerous goods
<b>GT/NT</b>	4,559 / 2,873
<b>Deadweight (summer)</b>	6,300 mt
<b>Max. draft (summer)</b>	6.55 m
<b>Length o.a.</b>	105.00 m
<b>Breadth moulded</b>	16.20 m
<b>Depth to main deck</b>	9.00 m
<b>Height above keel</b>	30.00 m
<b>Speed</b>	12.5 knots
<b>Fuel consumption</b>	15.5 mt RME 180 fuel per day at sea 1.5 mt MGO DMA per day in port without gear 3.0 mt MGO DMA per day in port with gear

## HOLDS/HATCHES/CRANES

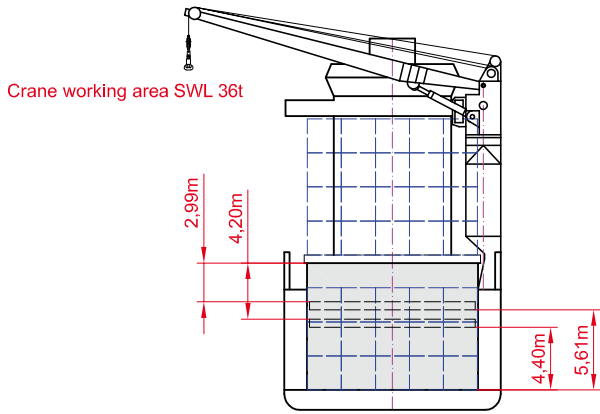
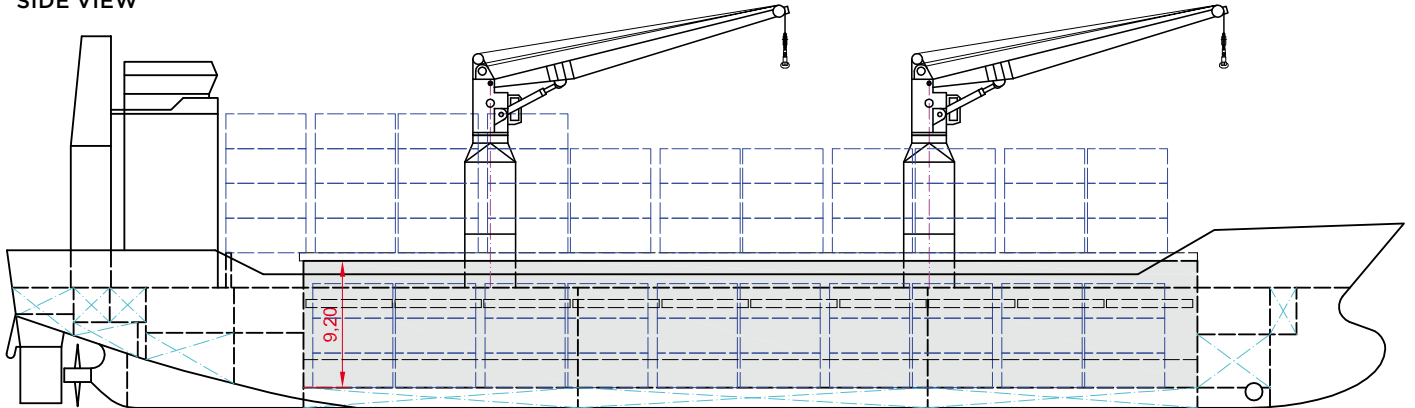
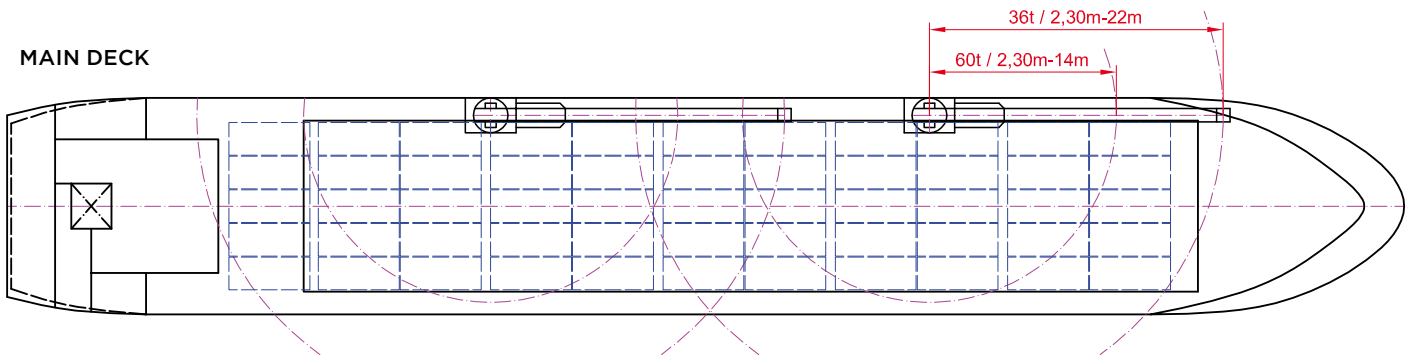
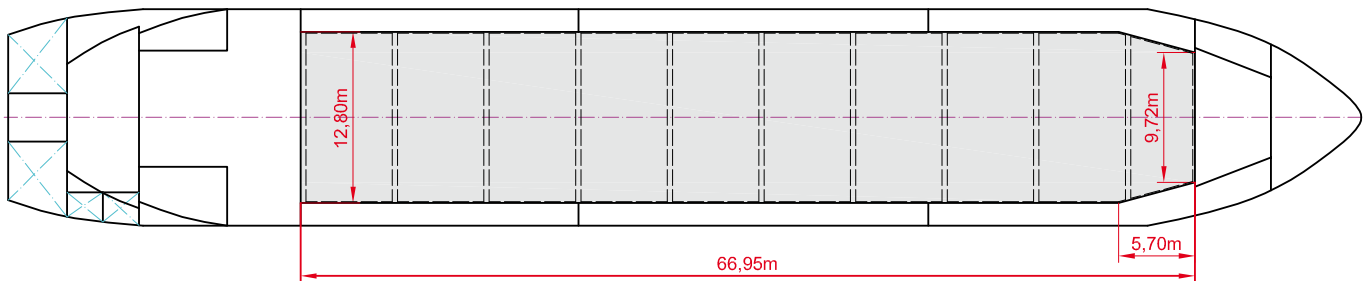
<b>Cargo hold capacity</b>	7,800 cbm / 275,450 cbft
<b>Floor space under deck</b>	1,665 sqm / 17,921 sqft
<b>Floor space on deck</b>	857 sqm / 9,224 sqft
<b>Cranes</b>	2 NMF cranes situated portside 60 mt capacity each / 120 mt capacity combined
<b>Container intake</b>	298 TEU nominal 226 TEU at 14 mt homogeneously loaded 45 reefer plugs
<b>Deck strengths per sqm</b>	13.00 mt on tanktop 2.50 mt on tweendeck 1.67 mt on hatchcovers

>>> see reverse side for further info/details

## SPECIAL EQUIPMENT/FEATURES

Fitted for trading Great Lakes and Australia.  
Fitted for carriage of dangerous goods of all IMO classes .

Speed and consumption figures are calculated basis maximum Beaufort 2, no swell and no adverse currents. Consumption data assumes shaft generator and reefer plugs disconnected. Vessel is burning fuels according to ISO 8217-2005. Intake is always subject to vessel's stability, trim, permissible weights and is subject to regulations of visibility. Lifting capacity of vessel's cranes is subject to vessel's stability and can depend on cargo/ballast on board. Container data as well as bale capacity assumes tweendeck ashore. All details including speed and consumption are given in good faith and are „about“ and are given without guarantee. They must not be used as basis for charterparties or contracts without BBC's explicit written authority.


**SIDE VIEW**

**MAIN DECK**

**TWEENDECK**

**HOLDS & DOUBLE BOTTOM**
