



Vessel name	Built	IMO no.	Flag	Vessel name	Built	IMO no.	Flag
BBC Konan	2000	9220641	Liberia	BBC Kusan	2000	9220639	Liberia

## MAIN DATA

<b>Vessel type</b>	Multipurpose Ro/Ro Heavylifter
<b>Classification</b>	GL + 100 A5 E3 Ro/Ro Ship G + MC E3 AUT strengthened for heavy cargoes, equipped for the carriage of containers, equipped for the carriage of dangerous goods
<b>GT/NT</b>	8,831 / 2,793
<b>Deadweight (summer)</b>	7,200 mt
<b>Max. draft (summer)</b>	6.65 m
<b>Length o.a.</b>	126.51 m
<b>Breadth moulded</b>	20.30 m
<b>Depth to main deck</b>	11.50 m
<b>Height above keel</b>	37.00 m
<b>Speed</b>	14.5 knots
<b>Fuel consumption</b>	24.0 mt RME 180 fuel per day at sea 1.5 mt MGO DMA per day in port without gear 3.0 mt MGO DMA per day in port with gear

## HOLDS/HATCHES/CRANES

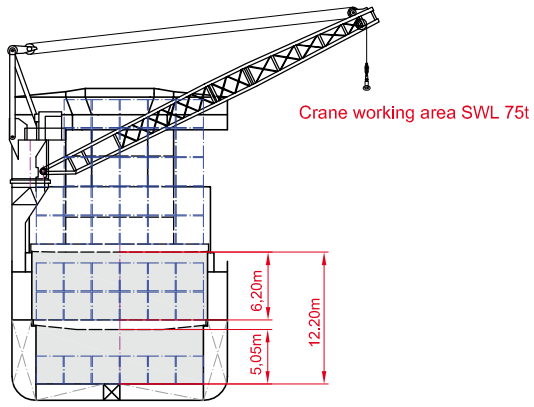
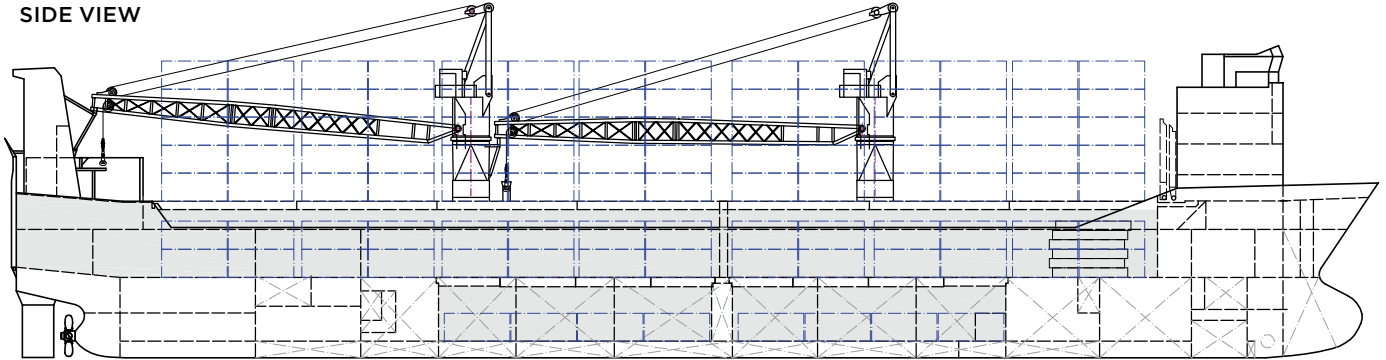
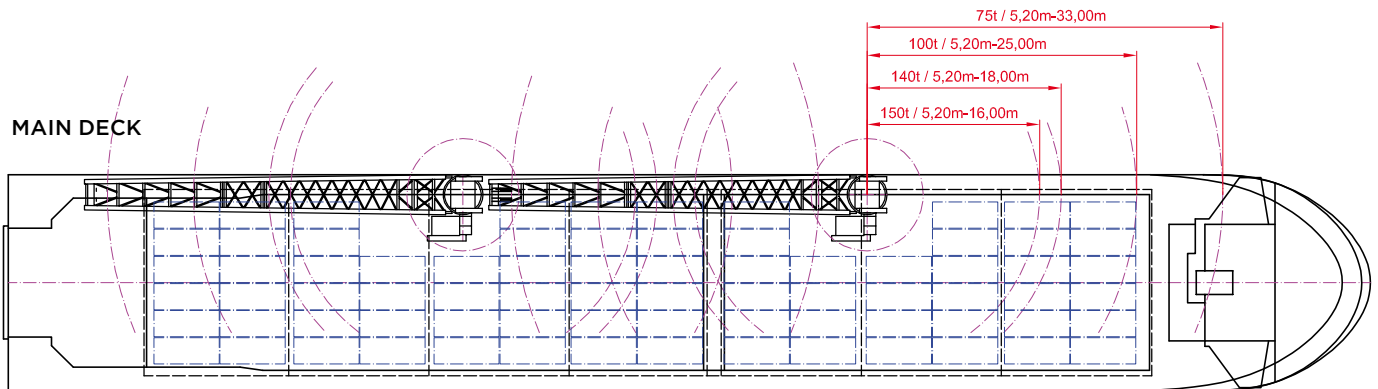
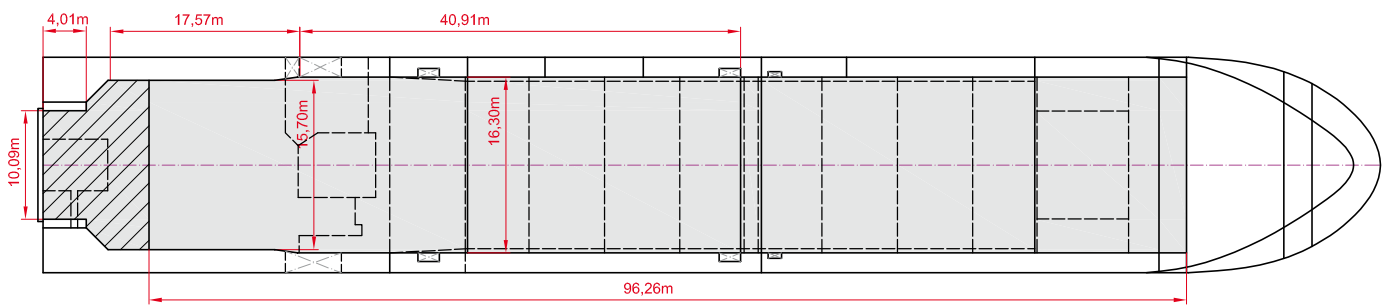
<b>Cargo hold capacity</b>	14,081 cbm / 497,288 cbft
<b>Floor space under deck</b>	2,467 sqm / 26,554 sqft
<b>Floor space on deck</b>	1,475 sqm / 15,876 sqft
<b>Cranes</b>	2 Liebherr cranes situated portside 150 mt capacity each / 300 mt capacity combined
<b>Container intake</b>	629 TEU nominal 425 TEU at 14 mt homogeneously loaded 40 reefer plugs on deck
<b>Deck strengths per sqm</b>	10.00 mt on tanktop 4.50 mt on tweendeck 1.75 mt on hatchcovers

>>> see reverse side for further info/details

## SPECIAL EQUIPMENT/FEATURES

Fitted with a ro-ro ramp (ramp opening 10 x 6.20 m; SWL 350 mt; 512 lm).  
Fitted for trading Australia.  
Fitted for carriage of dangerous goods of all IMO classes .

Speed and consumption figures are calculated basis maximum Beaufort 2, no swell and no adverse currents. Consumption data assumes shaft generator and reefer plugs disconnected. Vessel is burning fuels according to ISO 8217-2005. Intake is always subject to vessel's stability, trim, permissible weights and is subject to regulations of visibility. Lifting capacity of vessel's cranes is subject to vessel's stability and can depend on cargo/ballast on board. Container data as well as bale capacity assumes tweendeck ashore. All details including speed and consumption are given in good faith and are „about“ and are given without guarantee. They must not be used as basis for charterparties or contracts without BBC's explicit written authority.


**SIDE VIEW**

**MAIN DECK**

**TWEENDECK**

**HOLDS & DOUBLE BOTTOM**
