



Vessel name	Built	IMO no.	Flag	Vessel name	Built	IMO no.	Flag
BBC Karan	1998	9179842	Liberia	BBC Kelan	1998	9179854	Liberia

MAIN DATA

Vessel type	Multipurpose Ro/Ro Heavy-lifter
Classification	GL + 100 A5 E3 Ro/Ro Ship G + MC E3 AUT strengthened for heavy cargoes, equipped for the carriage of containers, equipped for the carriage of dangerous goods
GT/NT	8,811 / 2,793
Deadweight (summer)	7,200 mt
Max. draft (summer)	6.65 m
Length o.a.	126.51 m
Breadth moulded	20.30 m
Depth to main deck	11.50 m
Height above keel	37.00 m
Speed	14.5 knots
Fuel consumption	24.0 mt RME 180 fuel per day at sea 1.5 mt MGO DMA per day in port without gear 3.0 mt MGO DMA per day in port with gear

HOLDS/HATCHES/CRANES

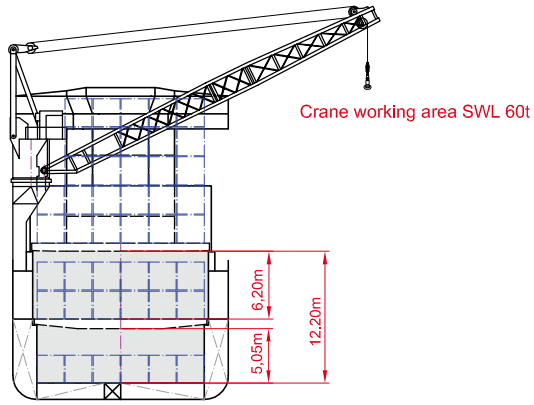
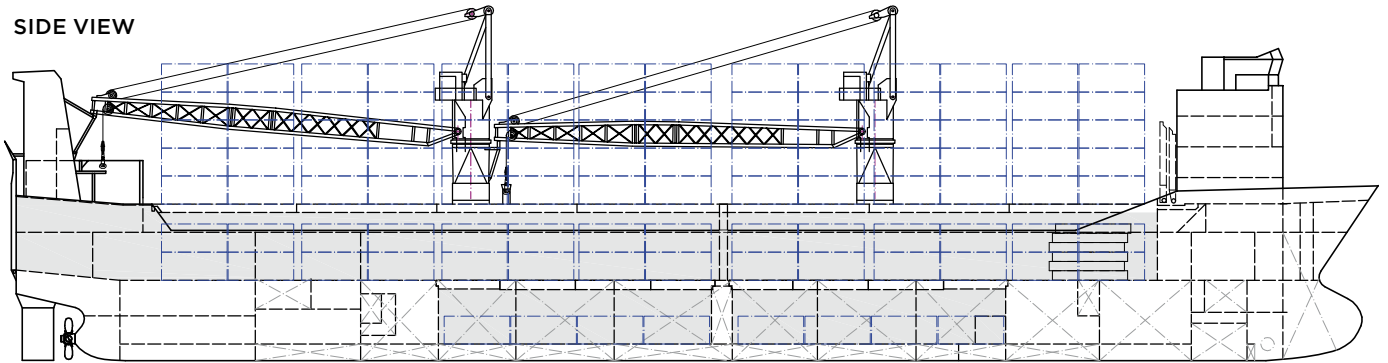
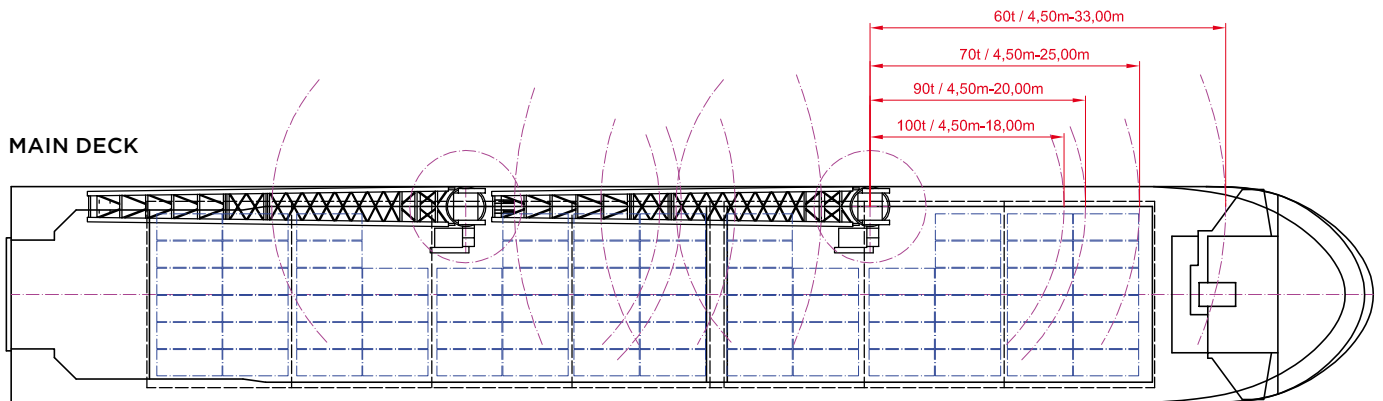
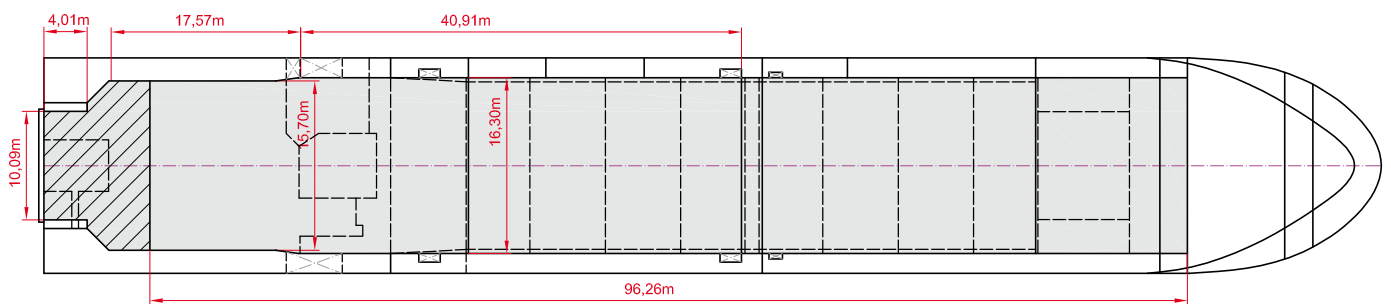
Cargo hold capacity	14,081 cbm / 497,288 cbft
Floor space under deck	2,467 sqm / 26,554 sqft
Floor space on deck	1,475 sqm / 15,876 sqft
Cranes	2 Liebherr cranes situated portside 100 mt capacity each / 200 mt capacity combined
Container intake	629 TEU nominal 425 TEU at 14 mt homogeneously loaded 40 reefer plugs on deck
Deck strengths per sqm	10.00 mt on tanktop 4.50 mt on tweendeck 1.75 mt on hatchcovers

>>> see reverse side for further info/details

SPECIAL EQUIPMENT/FEATURES

Fitted with a ro-ro ramp (ramp opening 10 x 6.20 m; SWL 350 mt; 512 lm).
Fitted for trading Australia.
Fitted for carriage of dangerous goods of all IMO classes .

Speed and consumption figures are calculated basis maximum Beaufort 2, no swell and no adverse currents. Consumption data assumes shaft generator and reefer plugs disconnected. Vessel is burning fuels according to ISO 8217-2005. Intake is always subject to vessel's stability, trim, permissible weights and is subject to regulations of visibility. Lifting capacity of vessel's cranes is subject to vessel's stability and can depend on cargo/ballast on board. Container data as well as bale capacity assumes tweendeck ashore. All details including speed and consumption are given in good faith and are „about“ and are given without guarantee. They must not be used as basis for charterparties or contracts without BBC's explicit written authority.


SIDE VIEW

MAIN DECK

TWEENDECK

HOLDS & DOUBLE BOTTOM
