



Vessel name	Built	IMO no.	Flag	Vessel name	Built	IMO no.	Flag
BBC England	2003	9258985	Antigua & Barbuda	Batz	2004	9290048	Antigua & Barbuda
Molene	2004	9290050	Antigua & Barbuda				

## MAIN DATA

<b>Vessel type</b>	Multipurpose Tweendecker
<b>Classification</b>	GL + 100 A5 EG + MC E AUT (BBC England) GL + 100 A5 EG + MC E3 AUT (Batz, Molene) strengthened for heavy cargoes, equipped for the carriage of containers, equipped for the carriage of dangerous goods
<b>GT/NT</b>	7,586 / 3,856
<b>Deadweight (summer)</b>	10,258 mt
<b>Max. draft (summer)</b>	7.33 m
<b>Length o.a.</b>	136.74 m
<b>Breadth moulded</b>	18.25 m
<b>Depth to main deck</b>	10.15 m
<b>Height above keel</b>	35.70 m
<b>Speed</b>	14.5 knots
<b>Fuel consumption</b>	18.0 mt RMG 380 fuel per day at sea 1.0 mt MGO DMA per day in port without gear 3.0 mt MGO DMA per day in port with gear

## HOLDS/HATCHES/CRANES

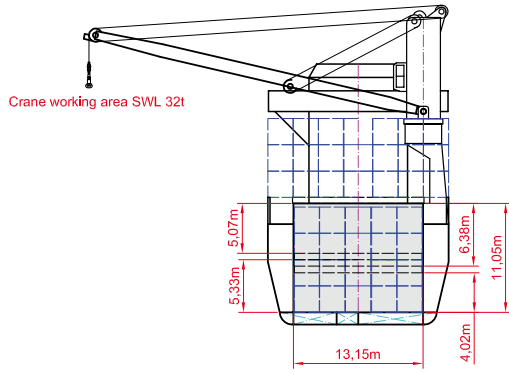
<b>Cargo hold capacity</b>	14,698 cbm / 519,053 cbft
<b>Floor space under deck</b>	2,489 sqm / 26,791 sqft
<b>Floor space on deck</b>	1,372 sqm / 14,768 sqft
<b>Cranes</b>	2 Mac Gregor-Hägglund cranes situated portside 80 mt capacity each / 160 mt capacity combined
<b>Container intake</b>	672 TEU nominal 414 TEU at 14 mt homogeneously loaded 60 reefer plugs on deck
<b>Deck strengths per sqm</b>	16.00 mt on tanktop 3.50 mt on tweendeck 1.75 mt on hatchcovers

>>> see reverse side for further info/details

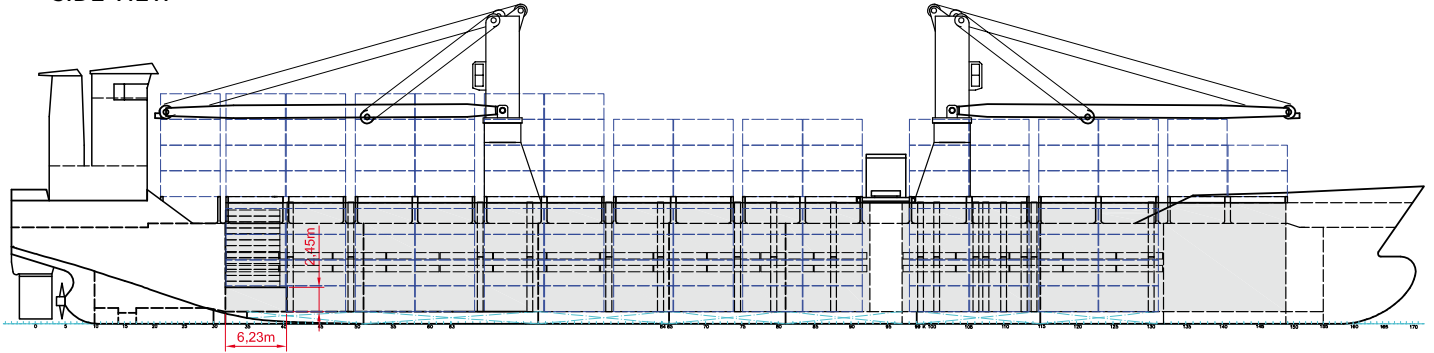
## SPECIAL EQUIPMENT/FEATURES

Fitted for trading Great Lakes and Australia.  
Fitted for carriage of dangerous goods of all IMO classes.

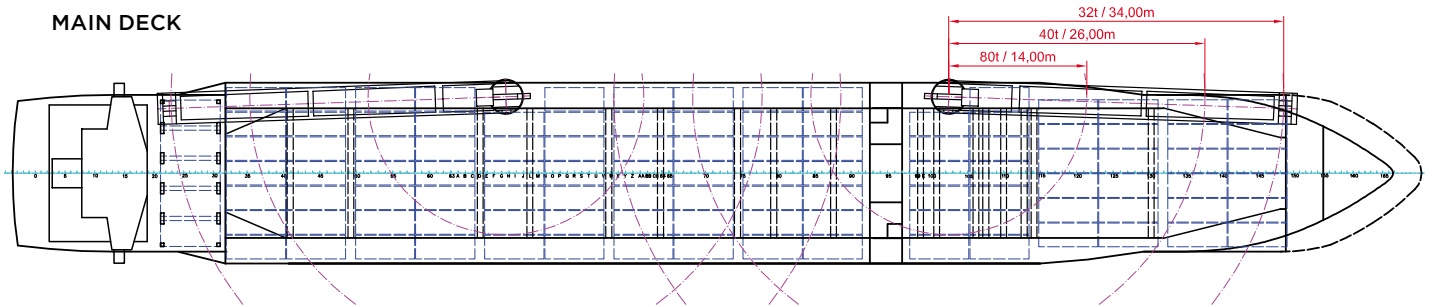
Speed and consumption figures are calculated basis maximum Beaufort 2, no swell and no adverse currents. Consumption data assumes shaft generator and reefer plugs disconnected. Vessel is burning fuels according to ISO 8217-2005. Intake is always subject to vessel's stability, trim, permissible weights and is subject to regulations of visibility. Lifting capacity of vessel's cranes is subject to vessel's stability and can depend on cargo/ballast on board. Container data as well as bale capacity assumes tweendeck ashore. All details including speed and consumption are given in good faith and are „about“ and are given without guarantee. They must not be used as basis for charterparties or contracts without BBC's explicit written authority.



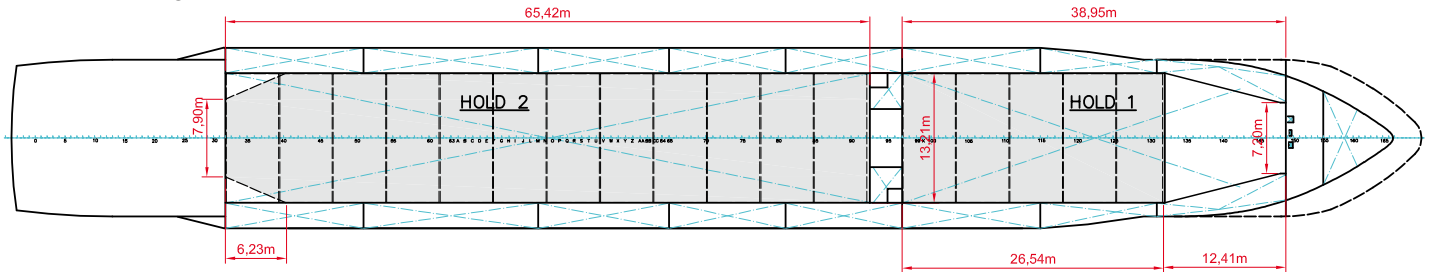
**SIDE VIEW**



**MAIN DECK**



**TWEENDECK**



**HOLDS & DOUBLE BOTTOM**

