



Vessel name	Built	IMO no.	Flag	Vessel name	Built	IMO no.	Flag
BBC Ems	2006	9347035	Antigua & Barbuda	BBC Amazon	2007	9303302	Antigua & Barbuda
BBC Weser	2006	9347047	Antigua & Barbuda	Kurt Paul	2009	9435856	Antigua & Barbuda
BBC Elbe	2006	9347059	Germany	BBC Volga	2009	9436329	Gibraltar
BBC Mississippi	2006	9347061	Antigua & Barbuda	BBC Hudson	2009	9435868	Antigua & Barbuda
Sjard	2007	9303314	Antigua & Barbuda				

## MAIN DATA

<b>Vessel type</b>	Multipurpose Tweendecker
<b>Classification</b>	GL + 100 A5 ICE E3 G + MC E3 AUT strengthened for heavy cargoes, equipped for the carriage of containers, equipped for the carriage of dangerous goods
<b>GT/NT</b>	12,936 / 5,824
<b>Deadweight (summer)</b>	17,500 mt
<b>Max. draft (summer)</b>	9.70 m
<b>Length o.a.</b>	143.14 m
<b>Breadth moulded</b>	22.80 m
<b>Depth to main deck</b>	13.30 m
<b>Height above keel</b>	41.40 m
<b>Speed</b>	15.0 knots
<b>Fuel consumption</b>	29.0 mt RMG 380 fuel per day at sea 2.1 mt MGO DMA per day in port without gear 4.7 mt MGO DMA per day in port with gear

## HOLDS/HATCHES/CRANES

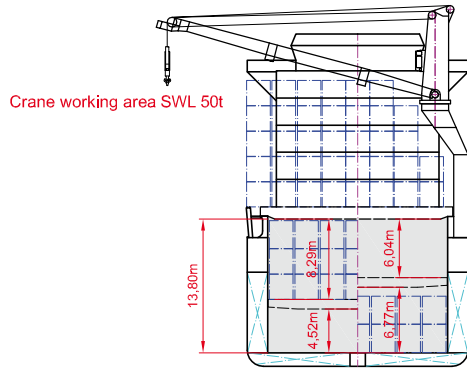
<b>Cargo hold capacity</b>	21,539 cbm / 760,642 cbft
<b>Floor space under deck</b>	3,184 sqm / 34,276 sqft 2,885 sqm / 31,062 sqft (BBC Weser)
<b>Floor space on deck</b>	1,480 sqm / 15,930 sqft
<b>Cranes</b>	3 NMF cranes situated portside 80 mt capacity each / 160 mt capacity combined
<b>Container intake</b>	958 TEU nominal 617 TEU at 14 mt homogeneously loaded 64 reefer plugs on deck
<b>Deck strengths per sqm</b>	20.00 mt on tanktop 4.70 mt on tweendeck 2.20 mt on hatchcovers

>>> see reverse side for further info/details

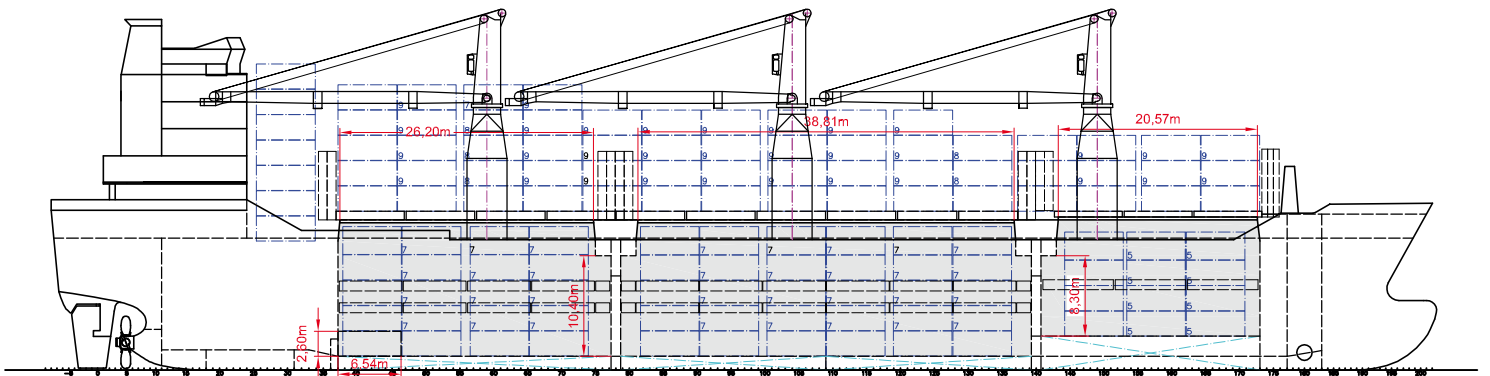
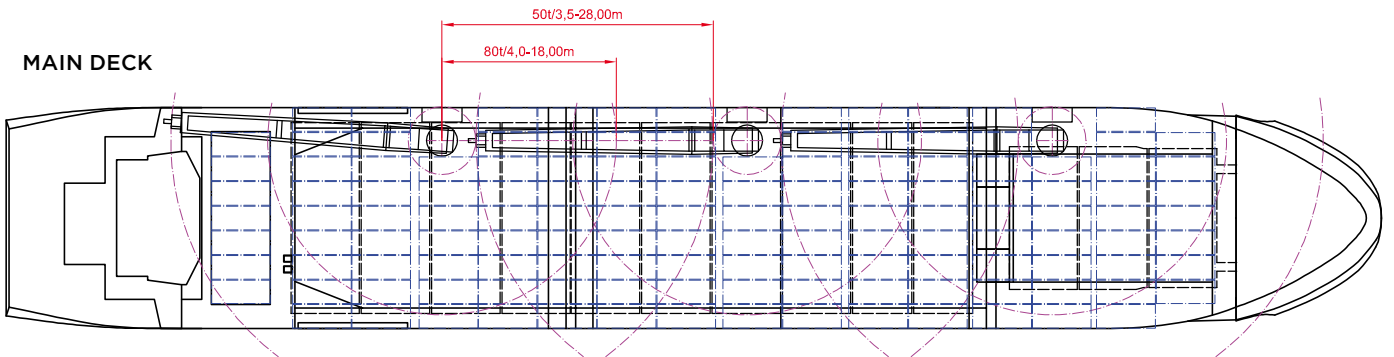
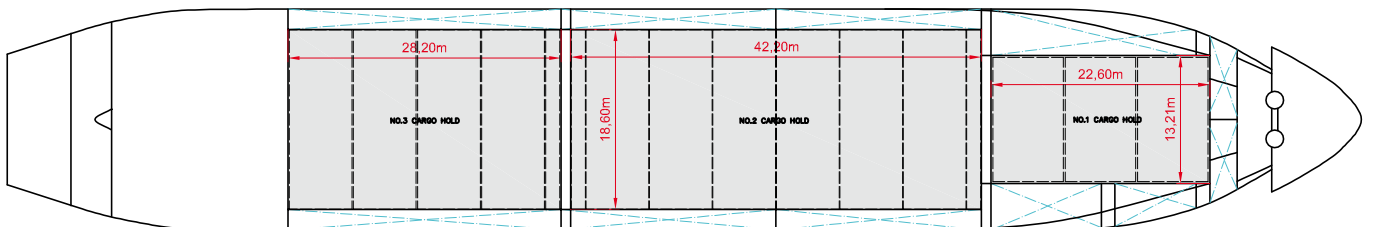
## SPECIAL EQUIPMENT/FEATURES

Fitted for trading Great Lakes and Australia.  
Fitted for carriage of dangerous goods of all IMO classes.

Speed and consumption figures are calculated basis maximum Beaufort 2, no swell and no adverse currents. Consumption data assumes shaft generator and reefer plugs disconnected. Vessel is burning fuels according to ISO 8217-2005. Intake is always subject to vessel's stability, trim, permissible weights and is subject to regulations of visibility. Lifting capacity of vessel's cranes is subject to vessel's stability and can depend on cargo/ballast on board. Container data as well as bale capacity assumes tweendeck ashore. All details including speed and consumption are given in good faith and are „about“ and are given without guarantee. They must not be used as basis for charterparties or contracts without BBC's explicit written authority.



BBC Ems	BBC Amazon
BBC Weser	Kurt Paul
BBC Elbe	BBC Volga
BBC Mississippi	BBC Hudson
Sjard	

**SIDE VIEW**

**MAIN DECK**

**TWENDECK**

**HOLDS & DOUBLE BOTTOM**
