



Vessel name	Built	IMO no.	Flag
BBC Ecuador	2000	9222352	Antigua & Barbuda

## MAIN DATA

<b>Vessel type</b>	Multipurpose Heavy-lifter
<b>Classification</b>	GL + 100 A5 E3 G IW + MC E3 AUT strengthened for heavy cargoes, equipped for the carriage of containers, equipped for the carriage of dangerous goods
<b>GT/NT</b>	5,548 / 3,020
<b>Deadweight (summer)</b>	6,357 mt
<b>Max. draft (summer)</b>	6.55 m
<b>Length o.a.</b>	121.60 m
<b>Breadth moulded</b>	18.20 m
<b>Depth to main deck</b>	8.40 m
<b>Height above keel</b>	38.00 m
<b>Speed</b>	15.0 knots
<b>Fuel consumption</b>	17.8 mt RMG 380 fuel per day at sea 1.5 mt MGO DMA per day in port without gear 3.0 mt MGO DMA per day in port with gear

## HOLDS/HATCHES/CRANES

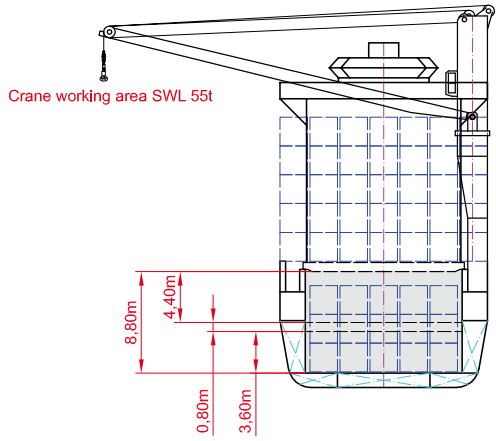
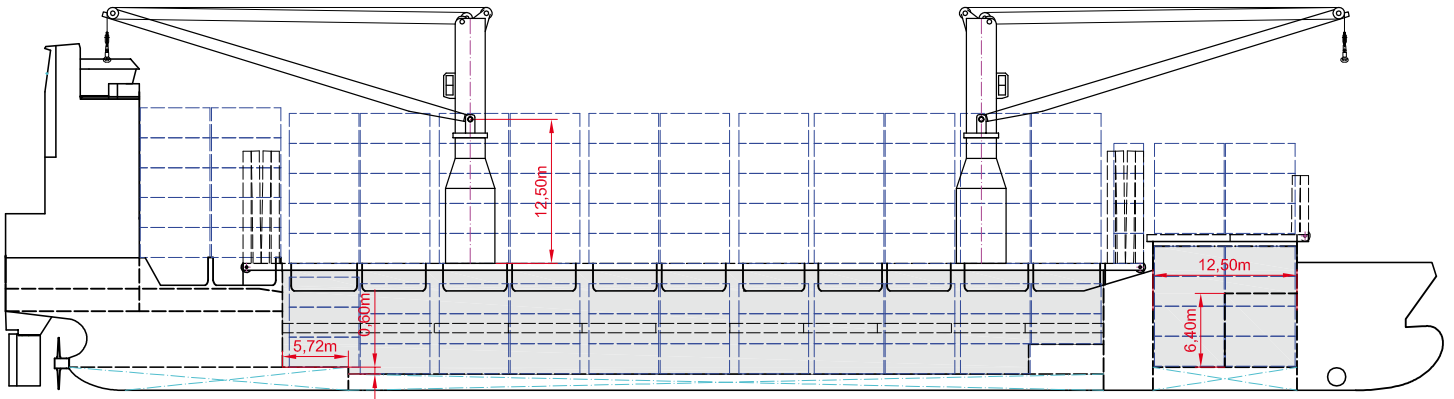
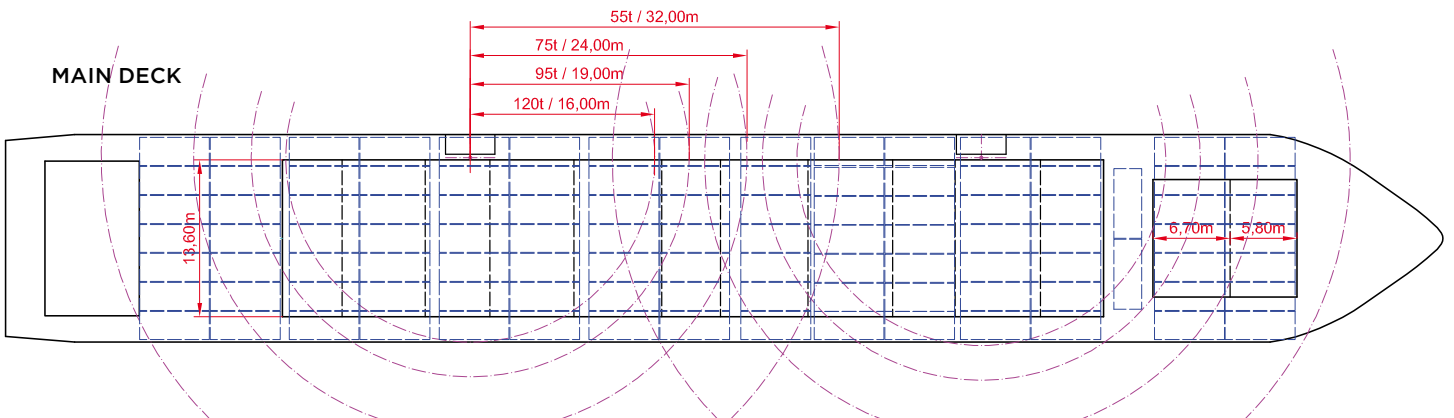
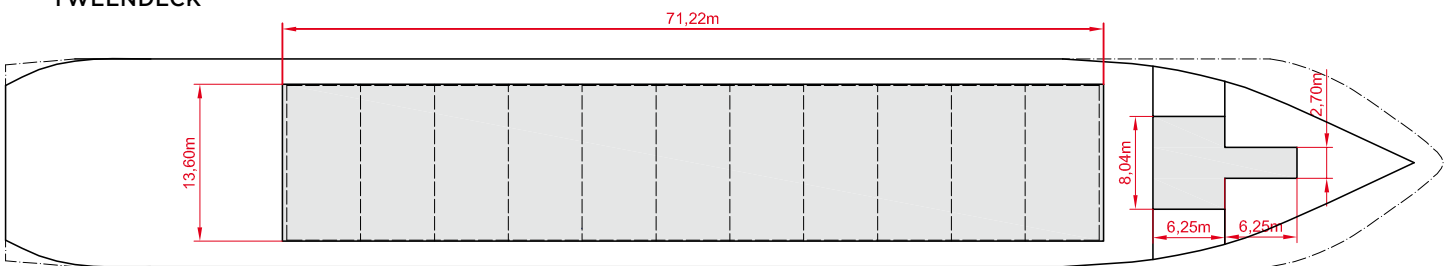
<b>Cargo hold capacity</b>	9,939 cbm / 350,992 cbft
<b>Floor space under deck</b>	2,023 sqm / 21,775 sqft
<b>Floor space on deck</b>	1,116 sqm / 12,013 sqft
<b>Cranes</b>	2 NMF cranes situated portside 120 mt capacity each / 240 mt capacity combined
<b>Container intake</b>	611 TEU nominal 299 TEU at 14 mt homogeneously loaded 92 reefer plugs
<b>Deck strengths per sqm</b>	15.00 mt on tanktop 2.25 mt on tweendeck 1.75 mt on hatchcovers

>>> see reverse side for further info/details

## SPECIAL EQUIPMENT/FEATURES

Fitted for trading Australia.  
Fitted for carriage of dangerous goods of all IMO classes .

Speed and consumption figures are calculated basis maximum Beaufort 2, no swell and no adverse currents. Consumption data assumes shaft generator and reefer plugs disconnected. Vessel is burning fuels according to ISO 8217-2005. Intake is always subject to vessel's stability, trim, permissible weights and is subject to regulations of visibility. Lifting capacity of vessel's cranes is subject to vessel's stability and can depend on cargo/ballast on board. Container data as well as bale capacity assumes tweendeck ashore. All details including speed and consumption are given in good faith and are „about“ and are given without guarantee. They must not be used as basis for charterparties or contracts without BBC's explicit written authority.


**SIDE VIEW**

**MAIN DECK**

**TWEENDECK**

**HOLDS & DOUBLE BOTTOM**
