



Vessel name	Built	IMO no.	Flag	Vessel name	Built	IMO no.	Flag
BBC Bergen	2011	9437153	Antigua & Barbuda	BBC Brisbane	2012	9578763	Antigua & Barbuda
BBC Bangkok	2011	9437165	Antigua & Barbuda	BBC Bahrein	2012	9578751	Antigua & Barbuda
BBC Belem	2012	9501655	Antigua & Barbuda	BBC Barcelona	2012	9501679	Antigua & Barbuda
BBC Balboa	2012	9501667	Antigua & Barbuda	BBC Baltimore	2012	9501681	Antigua & Barbuda

MAIN DATA

Vessel type	Multipurpose Tweendecker
Classification	GL + 100 A5 E3 G + MCE3 AUT strengthened for heavy cargoes, equipped for the carriage of containers, equipped for the carriage of dangerous goods
GT/NT	6,310 / 2,841
Deadweight (summer)	8,000 mt
Max. draft (summer)	7.00 m
Length o.a.	128.45 m
Breadth moulded	16.50 m
Depth to main deck	10.00 m
Height above keel	35.60 m
Speed	14.0 knots
Fuel consumption	14.5 mt RMG 380 fuel per day at sea

HOLDS/HATCHES/CRANES

Cargo hold capacity	11,500 cbm / 406,365 cbft
Floor space under deck	2,349 sqm / 25,284 sqft
Floor space on deck	1,175 sqm / 12,648 sqft
Cranes	2 NMF cranes situated portside 80 mt capacity each / 160 mt capacity combined
Container intake	455 TEU nominal 355 TEU at 14 mt homogeneously loaded
Deck strengths per sqm	20.00 mt on tanktop 3.50 mt on tweendeck (upper position) 2.00 mt on hatchcovers

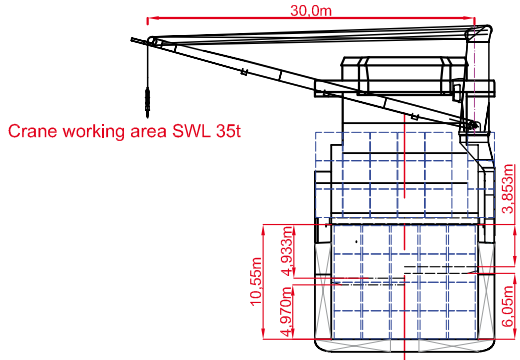
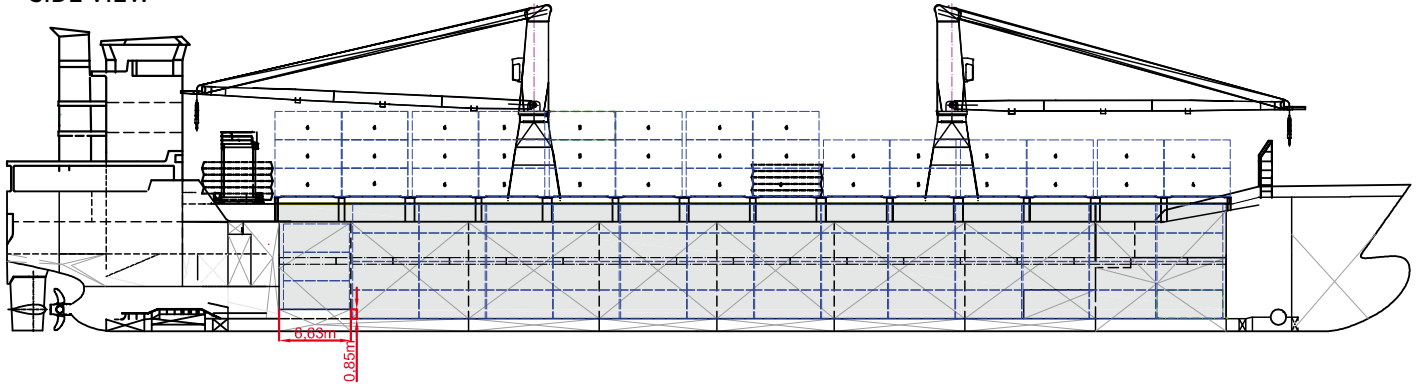
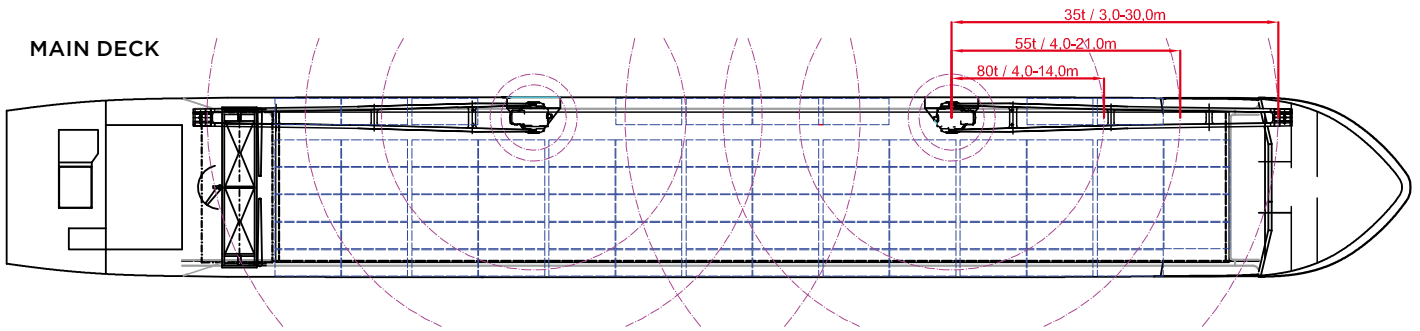
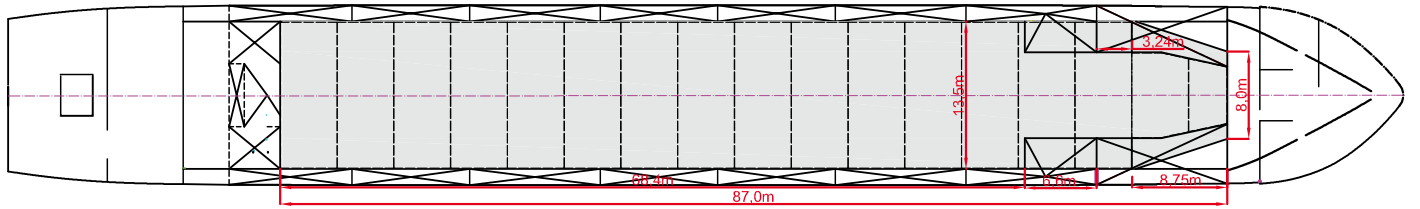
>>> see reverse side for further info/details

SPECIAL EQUIPMENT/FEATURES

Fitted for trading Great Lakes and Australia.
Fitted for carriage of dangerous goods of all IMO classes.

Speed and consumption figures are calculated basis maximum Beaufort 2, no swell and no adverse currents. Consumption data assumes shaft generator and reefer plugs disconnected. Vessel is burning fuels according to ISO 8217-2005. Intake is always subject to vessel's stability, trim, permissible weights and is subject to regulations of visibility. Lifting capacity of vessel's cranes is subject to vessel's stability and can depend on cargo/ballast on board. Container data as well as bale capacity assumes tweendeck ashore. All details including speed and consumption are given in good faith and are „about“ and are given without guarantee. They must not be used as basis for charterparties or contracts without BBC's explicit written authority.

BBC Bergen	BBC Brisbane
BBC Bangkok	BBC Bahrein
BBC Belem	BBC Barcelona
BBC Balboa	BBC Baltimore


SIDE VIEW

MAIN DECK

TWEENDECK

HOLDS & DOUBLE BOTTOM
