



Vessel name	Built	IMO no.	Flag	Vessel name	Built	IMO no.	Flag
BBC Anglia	1997	9137739	Antigua & Barbuda	BBC Denmark	1999	9197674	Netherlands Antilles
Skafafell	1997	9137741	Gibraltar	BBC Canada	1999	9197686	Gibraltar
BBC Iceland	1999	9173331	Antigua & Barbuda				

MAIN DATA

Vessel type	Multipurpose Tweendecker
Classification	GL + 100 A5 E3 G + MCE3 AUT strengthened for heavy cargoes, equipped for the carriage of containers, equipped for the carriage of dangerous goods
GT/NT	4,086 / 2,016
Deadweight (summer)	4,800 mt
Max. draft (summer)	6.40 m
Length o.a.	100.57 m
Breadth moulded	16.60 m
Depth to main deck	8.10 m
Height above keel	37.30 m
Speed	14.0 knots
Fuel consumption	14.5 mt RMG 380 fuel per day at sea 1.0 mt MGO DMA per day in port without gear 1.8 mt MGO DMA per day in port with gear

HOLDS/HATCHES/CRANES

Cargo hold capacity	6,800 cbm / 240,140 cbft
Floor space under deck	1,480 sqm / 15,931 sqft
Floor space on deck	855 sqm / 9,203 sqft
Cranes	2 NMF cranes situated portside 60 mt capacity each / 120 mt capacity combined
Container intake	364 TEU nominal 205 TEU at 14 mt homogeneously loaded 30 reefer plugs on deck
Deck strengths per sqm	17.00 mt on tanktop 2.50 mt on tweendeck 2.00 mt on hatchcovers

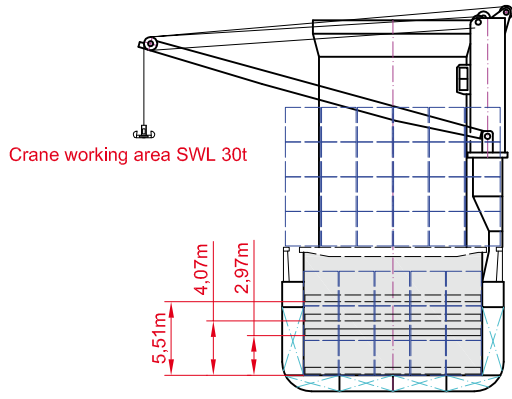
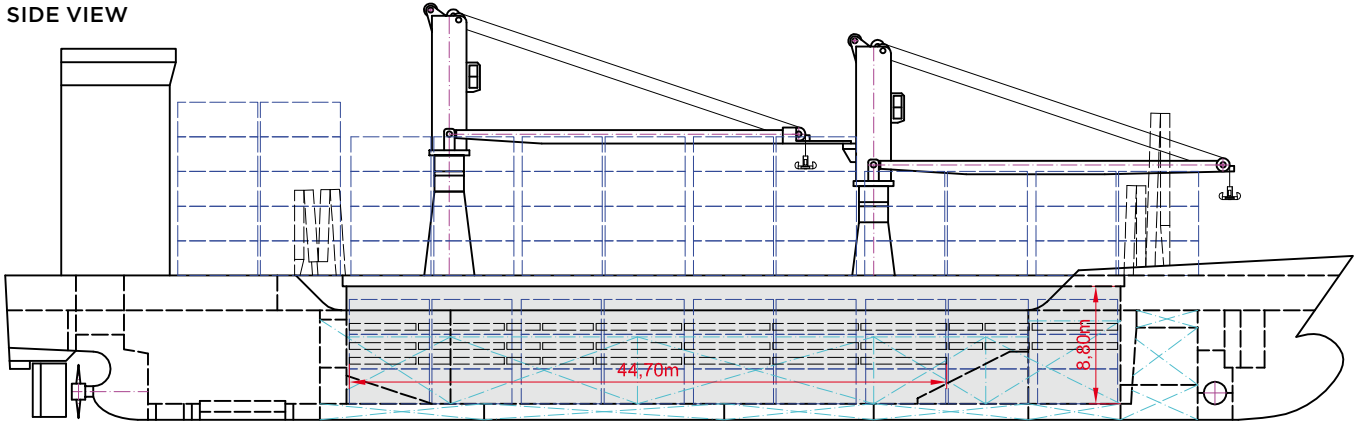
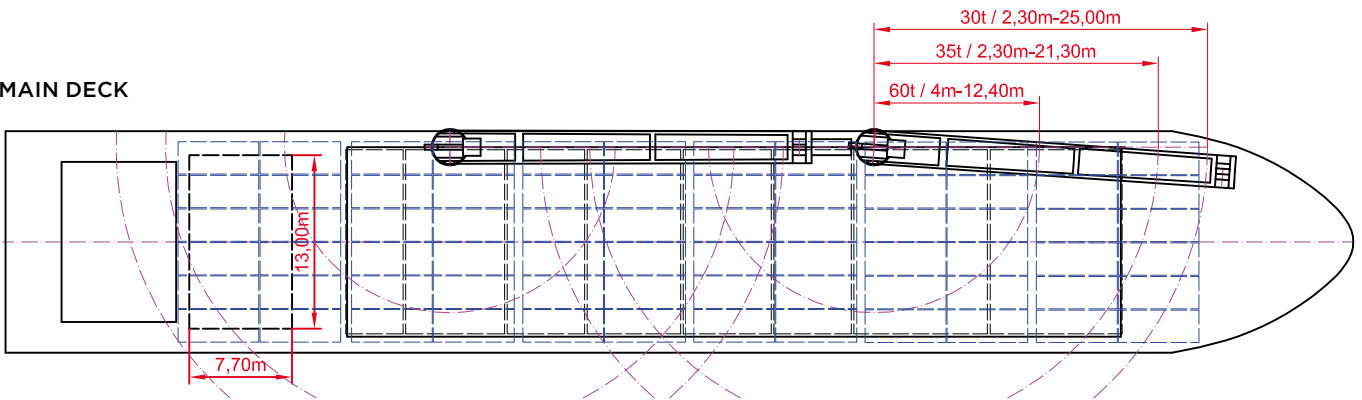
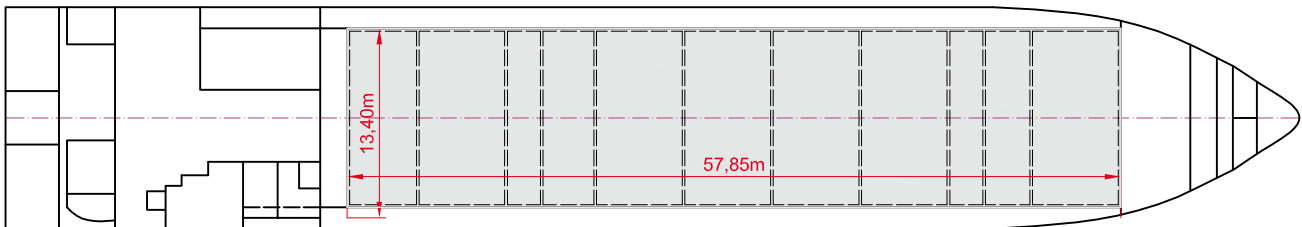
>>> see reverse side for further info/details

SPECIAL EQUIPMENT/FEATURES

Fitted for trading Great Lakes and Australia.
Fitted for carriage of dangerous goods of all IMO classes.
BBC Denmark is IMO7 / INF2 fitted.

Speed and consumption figures are calculated basis maximum Beaufort 2, no swell and no adverse currents. Consumption data assumes shaft generator and reefer plugs disconnected. Vessel is burning fuels according to ISO 8217-2005. Intake is always subject to vessel's stability, trim, permissible weights and is subject to regulations of visibility. Lifting capacity of vessel's cranes is subject to vessel's stability and can depend on cargo/ballast on board. Container data as well as bale capacity assumes tweendeck ashore. All details including speed and consumption are given in good faith and are „about“ and are given without guarantee. They must not be used as basis for charterparties or contracts without BBC's explicit written authority.

BBC Anglia	BBC Denmark
Skaftafell	BBC Canada
BBC Iceland	


SIDE VIEW

MAIN DECK

TWEENDECK

HOLDS & DOUBLE BOTTOM
