



Vessel name	Built	IMO no.	Flag	Vessel name	Built	IMO no.	Flag
BBC Amber	2011	9563706	Antigua & Barbuda	BBC Opal	2013	9504762	Antigua & Barbuda
BBC Amethyst	2012	9504724	Antigua & Barbuda	BBC Pearl	2013	9504786	Antigua & Barbuda
BBC Aquamarine	2012	9504736	Antigua & Barbuda	BBC Sapphire	2013	9504798	Antigua & Barbuda
BBC Citrine	2012	9504748	Antigua & Barbuda	BBC Ruby	2013	9563744	Antigua & Barbuda
BBC Coral	2012	9563720	Antigua & Barbuda	BBC Quartz	2014	9504774	Antigua & Barbuda
BBC Emerald	2012	9504750	Antigua & Barbuda	BBC Topaz	2014	9504815	Antigua & Barbuda
BBC Moonstone	2012	9563732	Antigua & Barbuda	BBC Tourmaline	2014	9504803	Antigua & Barbuda

MAIN DATA

Vessel type	Multipurpose Heavylifter
Classification	GL + 100 A5 E3 IW BWM DG + MC E3 AUT
GT/NT	12,838 / 5,968
Deadweight (summer)	14,360 mt
Max. draft (summer)	9.10 m
Length o.a.	153.44 m
Breadth moulded	23.20 m
Depth to main deck	11.95 m
Height above keel	40.85 m
Speed	17.5 knots
Fuel consumption	38.5 mt RMG 380 fuel per day at sea 2.0 mt MGO DMA per day in port without gear 4.0 mt MGO DMA per day in port with gear

HOLDS/HATCHES/CRANES

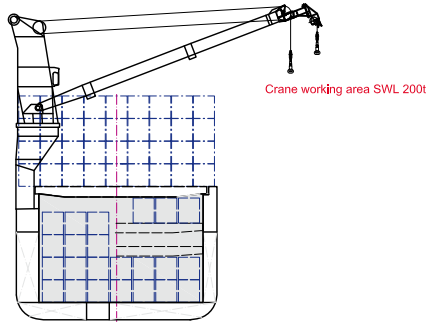
Cargo hold capacity	18,153 cbm / 641,057 cbft
Floor space under deck	2,986 sqm / 32,141 sqft
Floor space on deck	1,891 sqm / 20,354 sqft
Cranes	2 NMF cranes situated portside 400 mt capacity each / 800 mt capacity combined Plus 1 NMF crane situated starboardside 80 mt capacity
Container intake	958 TEU nominal
Deck strengths per sqm	20.00 mt on tanktop 5.00 mt on tweendeck 5.00 mt on hatchcovers

>>> see reverse side for further info/details

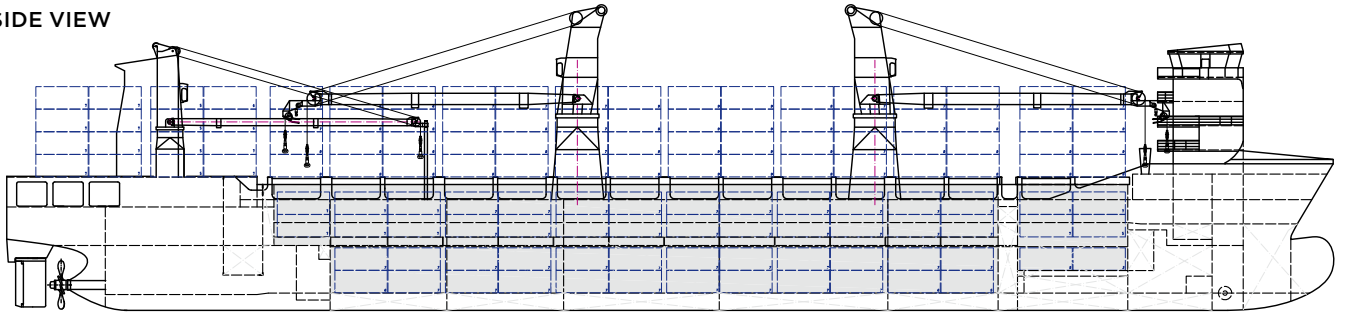
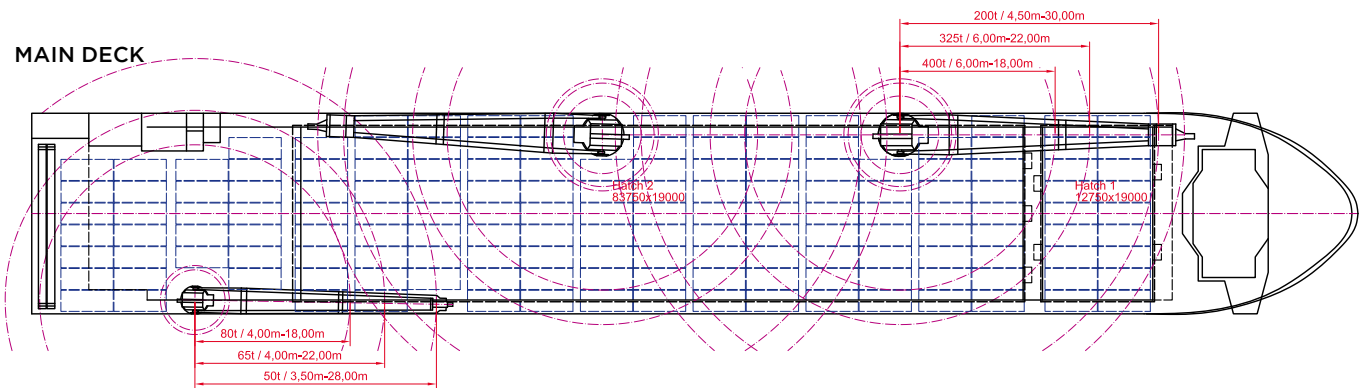
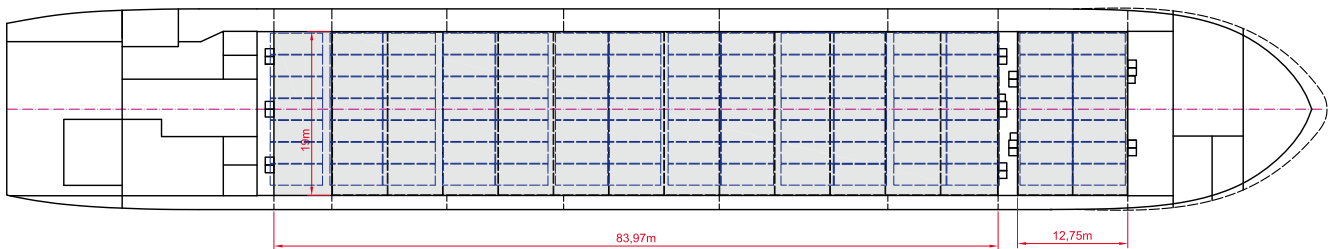
SPECIAL EQUIPMENT/FEATURES

Fitted for trading Australia.
Fitted for carriage of dangerous goods of all IMO classes.

Speed and consumption figures are calculated basis maximum Beaufort 2, no swell and no adverse currents. Consumption data assumes shaft generator and reefer plugs disconnected. Vessel is burning fuels according to ISO 8217-2005. Intake is always subject to vessel's stability, trim, permissible weights and is subject to regulations of visibility. Lifting capacity of vessel's cranes is subject to vessel's stability and can depend on cargo/ballast on board. Container data as well as bale capacity assumes tweendeck ashore. All details including speed and consumption are given in good faith and are „about“ and are given without guarantee. They must not be used as basis for charterparties or contracts without BBC's explicit written authority.



BBC Amber	BBC Opal
BBC Amethyst	BBC Pearl
BBC Aquamarine	BBC Sapphire
BBC Citrine	BBC Ruby
BBC Coral	BBC Quartz
BBC Emerald	BBC Topaz
BBC Moonstone	BBC Tourmaline

SIDE VIEW

MAIN DECK

TWEENDECK

HOLDS & DOUBLE BOTTOM
