



Vessel name	Built	IMO no.	Flag	Vessel name	Built	IMO no.	Flag
BBC Anglia	1997	9137739	Antigua & Barbuda	BBC Denmark	1999	9197674	Netherlands Antilles
Skafafell	1997	9137741	Gibraltar	BBC Canada	1999	9197686	Gibraltar
BBC Iceland	1999	9173331	Antigua & Barbuda				

## MAIN DATA

<b>Vessel type</b>	Multipurpose Tweendecker
<b>Classification</b>	GL + 100 A5 E3 G + MCE3 AUT strengthened for heavy cargoes, equipped for the carriage of containers, equipped for the carriage of dangerous goods
<b>GT/NT</b>	4,086 / 2,016
<b>Deadweight (summer)</b>	4,800 mt
<b>Max. draft (summer)</b>	6.40 m
<b>Length o.a.</b>	100.57 m
<b>Breadth moulded</b>	16.60 m
<b>Depth to main deck</b>	8.10 m
<b>Height above keel</b>	37.30 m
<b>Speed</b>	14.0 knots
<b>Fuel consumption</b>	15.5 mt RMG 380 fuel per day at sea 1.0 mt MGO DMA per day in port without gear 1.8 mt MGO DMA per day in port with gear

## HOLDS/HATCHES/CRANES

<b>Cargo hold capacity</b>	6,800 cbm / 240,140 cbft
<b>Floor space under deck</b>	1,480 sqm / 15,931 sqft
<b>Floor space on deck</b>	855 sqm / 9,203 sqft
<b>Cranes</b>	2 NMF cranes situated portside 60 mt capacity each / 120 mt capacity combined
<b>Container intake</b>	364 TEU nominal 205 TEU at 14 mt homogeneously loaded 30 reefer plugs on deck
<b>Deck strengths per sqm</b>	17.00 mt on tanktop 2.50 mt on tweendeck 2.00 mt on hatchcovers

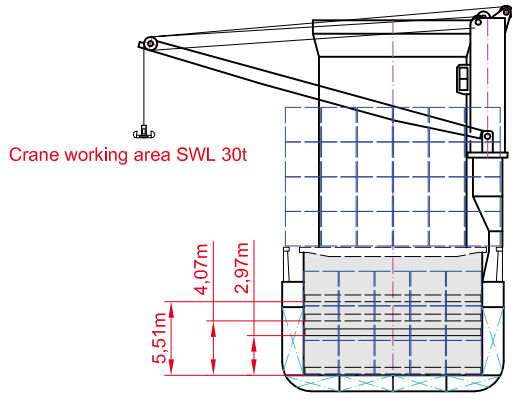
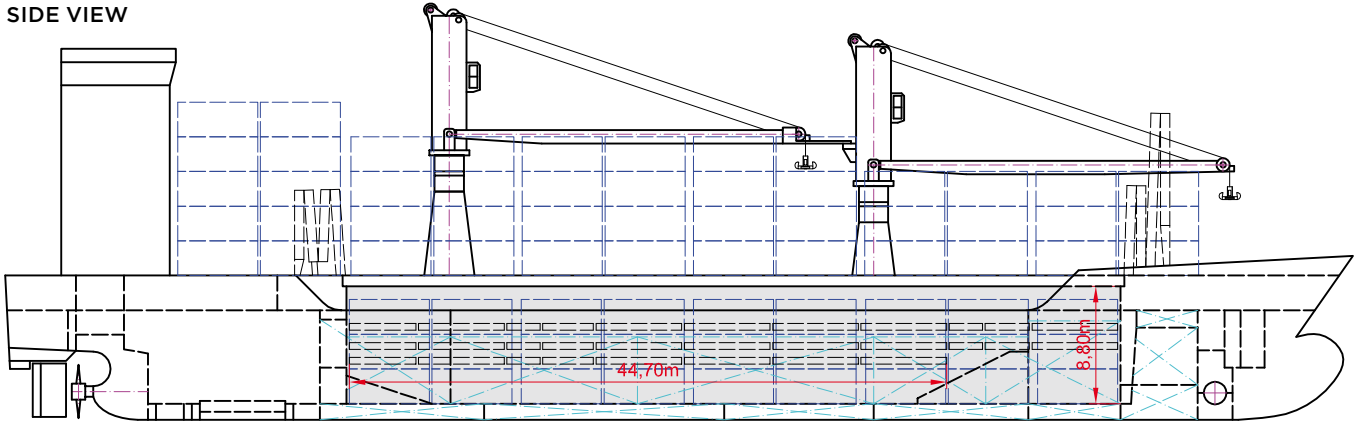
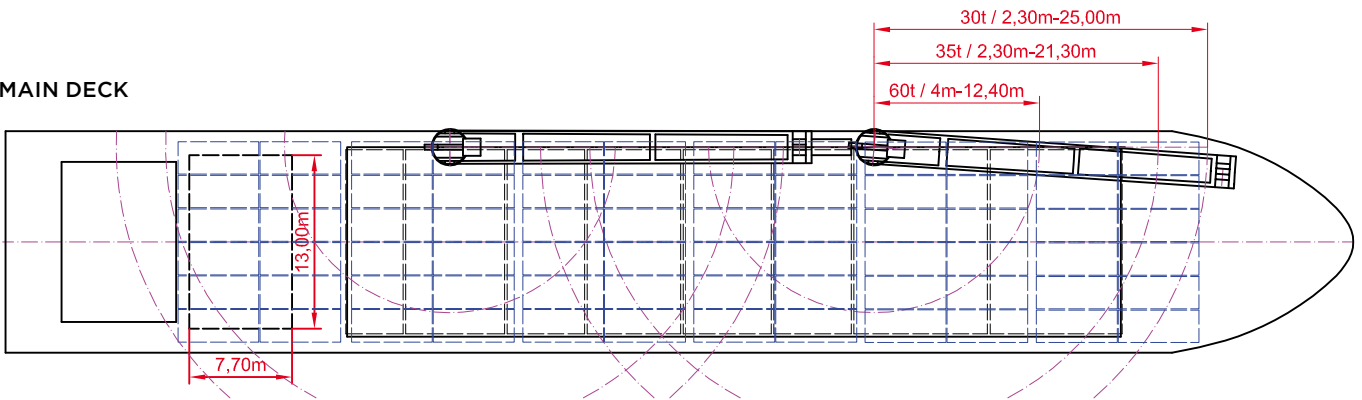
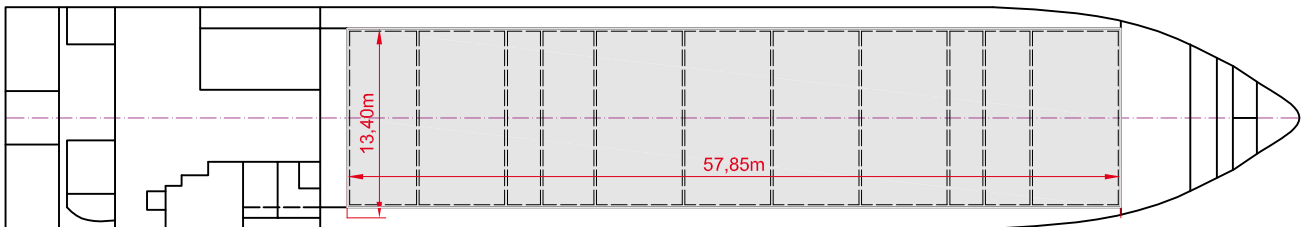
>>> see reverse side for further info/details

## SPECIAL EQUIPMENT/FEATURES

Fitted for trading Great Lakes and Australia.  
Fitted for carriage of dangerous goods of all IMO classes.  
BBC Denmark is IMO7 / INF2 fitted.

Speed and consumption figures are calculated basis maximum Beaufort 2, no swell and no adverse currents. Consumption data assumes shaft generator and reefer plugs disconnected. Vessel is burning fuels according to ISO 8217-2005. Intake is always subject to vessel's stability, trim, permissible weights and is subject to regulations of visibility. Lifting capacity of vessel's cranes is subject to vessel's stability and can depend on cargo/ballast on board. Container data as well as bale capacity assumes tweendeck ashore. All details including speed and consumption are given in good faith and are „about“ and are given without guarantee. They must not be used as basis for charterparties or contracts without BBC's explicit written authority.

BBC Anglia	BBC Denmark
Skaftafell	BBC Canada
BBC Iceland	


**SIDE VIEW**

**MAIN DECK**

**TWEENDECK**

**HOLDS & DOUBLE BOTTOM**
