





'Success comes when preparation and opportunity meet'

Dear business partners;

I would like to take this opportunity today to introduce both, the next generations of BBC Chartering heavy lift vessels, and the BBC Chartering Project Division to you.

Since our beginning in 1997, we have been following the call of our customers to constantly improve the quality of our tonnage and the quality of our service. Today we can claim to play a leading role in the global heavy lift project cargo market. Our 140 vessels represent one of the largest and most modern fleets of its kind in the world.

We are proud of our growth and development at BBC Chartering. We are aware that ongoing preparation plays a key role in future success. We are proud of the fact that we can now introduce an even higher level of service, and a fleet that caters to your demands in the ultra heavy lift segment with vessels capable of lifting up to 800mt.

With our new project division we strive to meet and exceed your expectations, being prepared to deliver on your project opportunities.

We look forward to many future successes with you!

Kind regards,



Svend Andersen
Chief Executive Officer



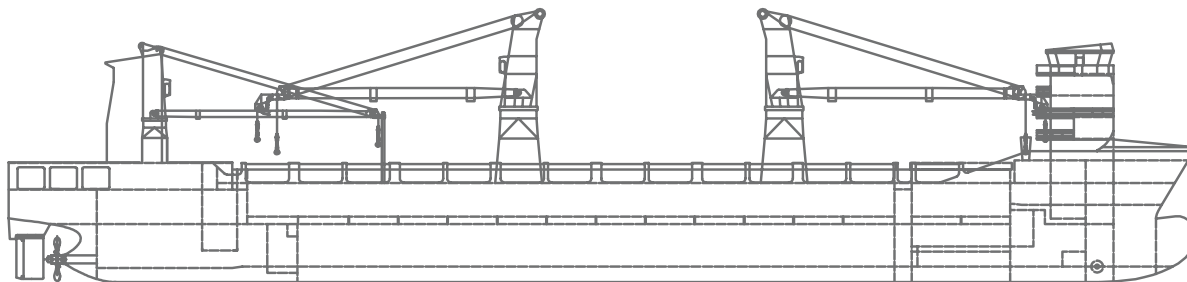
BBC AMBER

BBC Chartering

BBC Amber type Multipurpose heavy lifter with tween-deck

The BBC Amber represents the first of a series of 14 vessels that BBC Chartering is taking delivery of. The 14,360 dwt vessel series allows a maximum draft of 9.10m and features a combined lifting capacity of 800mt.

A universal cargo hold measuring 83m x 19m and a wheelhouse located at the forecastle of the ship turn the vessels of this series into precious assets that can deliver to new standards. We look forward to taking delivery of every one of these 14 gems by the end of 2013.



| | | | |
|----------------------------|---|-------------------------------|---|
| Vessel type | Multipurpose Heavylifter | Cargo hold capacity | 18,176 cbm / 641,878 cbft |
| Classification | GL + 100 A5 E3 IW BWM DG + MC E3 AUT | Floor space under deck | 2,986 sqm / 32,141 sqft |
| GT/NT | 12,838 / 5,968 | Floor space on deck | 1,891 sqm / 20,354 sqft |
| Deadweight (summer) | 14,360 mt | Cranes | 2 NMF cranes situated portside 400 mt capacity each 800 mt capacity combined Plus 1 NMF crane situated starboardside 80 mt capacity |
| Max. draft (summer) | 9.10 m | Container intake | 958 TEU nominal |
| Length o.a. | 153.44 m | Deck strengths per sqm | 20.00 mt on tanktop 5.00 mt on tweendeck 5.00 mt on hatchcovers |
| Breadth moulded | 23.20 m | | |
| Speed | 17.5 knots | | |

‘Like the chicken and the egg, enthusiasm and success seem to go together. We suspect, however, that enthusiasm comes first.’

Which came first, the chicken or the egg? We know there is no egg without a chicken, and vice versa; however, our new Project Division for ultra heavy lift projects originates purely from mindset. An attitude fueled by customer demand. An attitude driven by the goal to improve the services we offer. An attitude that portrays our ongoing quest for excellence, and forms the basis of our every action.

BBC Chartering enters into a new era. An era where we raise the bar and we challenge the status quo. This is the work of conviction, the ongoing quest to give our clients what they need. We embrace our role to support global economic development with the required tonnage, and with that we embrace the increasing importance of engineered transport solutions that accompany our services.





Shipping has been our passion since our first day of operation. We have come a long way from a small fleet of ten multipurpose vessels to a fleet of more than 140 vessels averaging less than five years of age. Our knowledge and our capacity has worked to your benefit ever since. We are convinced that this strategy will always find support as long as we are able to deliver. And we will.

We continue to invest in the future, and in our clients. By the end of 2013 we will employ 22 new vessels in the segment above 500mt lifting capacity. Certainly our fleet composition has helped us to respond most effectively to our client requirements, but with this increase the support of a dedicated team is needed, a team that is enthusiastic about your ultra heavy lift project challenges.

We have prepared a global organization to deliver the execution of such assignments. An experienced and professional team covers all relevant aspects of the work that starts with sales engineering and tender management in the preparation phase of the project, project management and transport engineering in the execution phase, and relevant HSEQ management throughout the delivery of a project in a joint process with the client.

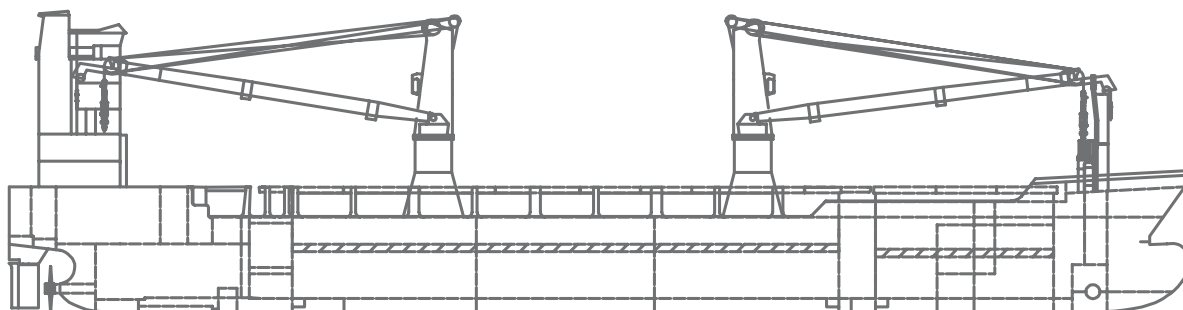
'Anchored by excellence' is our motto. Our experience and our commitment allow us to deliver what you need and ensure that you can reap the deserved fruit of your efforts.



BBC Everest type Multipurpose heavy lifter with tween-deck

The BBC Everest and the BBC Fuji are the first two vessels out of a series of eight joining the BBC Chartering fleet. With a 9,282 dwt, a maximum draft of 7.60m and a combined lifting capacity of 700mt these vessels are made to be flexible workhorses.

The sister vessels are the BBC Kibo, BBC Mont Blanc, BBC Olympus, BBC Rushmore, BBC Vesuvius, and the BBC Vinson. The entire suite of vessels is scheduled to be completely delivered by the end of 2013.



| | | | |
|----------------------------|---------------------------------------|-------------------------------|--|
| Vessel type | Multipurpose Heavyliifter | Cargo hold capacity | 12,391 cbm / 437,583 cbft |
| Classification | GL + 100 A5 ICE E G BWM + MC E AUT | Floor space under deck | 2,286 sqm / 24,606 sqft |
| GT/NT | 8,255 / 3,966 | Floor space on deck | 1,245 sqm / 13,401 sqft |
| Deadweight (summer) | 9,282 mt | Cranes | 2 NMF cranes situated portside 350 mt capacity each 700 mt capacity combined |
| Max. draft (summer) | 7.60 m | Container intake | 660 TEU nominal 60 reefer plugs on deck |
| Length o.a. | 125.80 m | Deck strengths per sqm | 16.00 mt on tanktop 4.70 mt on tweendeck 2.20 mt on hatchcovers |
| Breadth moulded | 22.00 m | | |
| Speed | 16.5 knots | | |

‘Quality is never an accident; it is always the result of high intentions, sincere effort, intelligent direction and skillful execution; it represents the wise choice of many alternatives.’

Our project division team looks forward to assist you:

Project division lead & global tender coordination

Regional project division – Europe/Africa

Mr. Roberto Frigeni

Mr. Jens Meilvang

Ms. Wiebke Buerger

Phone +49 491 925 2090

projects@bbc-chartering.com

Regional project division – Mediterranean

Mr. Matteo Fortuna

Phone +39 010 8990 950

matteo.fortuna@bbc-chartering.com

Regional project division – North America

Mr. Per Petersen

Phone +1 713 668 4020

per.petersen@bbc-chartering.com

Regional project division – Middle East/Asia/Australia

Mr. Steven Dillon

Phone +65 6576 4130

steven.dillon@bbc-chartering.com

Regional project division – South America

Ms. Natalie Jones

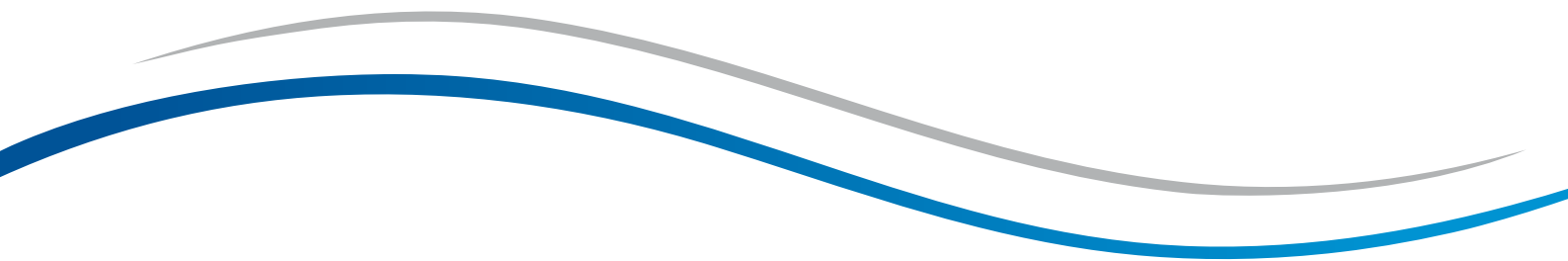
Phone +55 11 5542 7446

natalie.jones@bbc-chartering.com



NMF

31
21



Anchored by excellence. www.bbc-chartering.com/projects