



Vessel name	Built	IMO no.	Flag	Vessel name	Built	IMO no.	Flag
BBC Amber	2011	9563706	Antigua & Barbuda	BBC Opal	2012	9504762	tba
BBC Amethyst	2011	9504724	Antigua & Barbuda	BBC Pearl	2012	9504786	tba
BBC Aquamarine	2011	9504736	Antigua & Barbuda	BBC Sapphire	2012	9504798	tba
BBC Citrine	2012	9504748	tba	BBC Ruby	2013	tba	tba
BBC Coral	2012	9563720	tba	BBC Quartz	2013	9504774	tba
BBC Emerald	2012	9504750	tba	BBC Topaz	2013	tba	tba
BBC Moonstone	2012	9563732	tba	BBC Tourmaline	2013	9504803	tba

## MAIN DATA

<b>Vessel type</b>	Multipurpose Heavylifter
<b>Classification</b>	GL + 100 A5 E3 IW BWM DG + MCE3 AUT
<b>GT/NT</b>	12,838 / 5,968
<b>Deadweight (summer)</b>	14,360 mt
<b>Max. draft (summer)</b>	9.10 m
<b>Length o.a.</b>	153.44 m
<b>Breadth moulded</b>	23.20 m
<b>Depth to main deck</b>	11.95 m
<b>Height above keel</b>	40.85 m
<b>Speed</b>	17.5 knots
<b>Fuel consumption</b>	38.5 mt RMG 380 fuel per day at sea tba mt MGO DMA per day in port without gear tba mt MGO DMA per day in port with gear

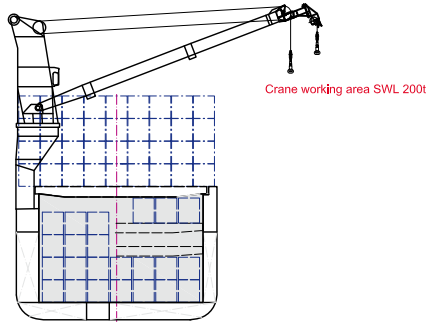
## HOLDS/HATCHES/CRANES

<b>Cargo hold capacity</b>	18,176 cbm / 641,878 cbft
<b>Floor space under deck</b>	2,986 sqm / 32,141 sqft
<b>Floor space on deck</b>	1,891 sqm / 20,354 sqft
<b>Cranes</b>	2 NMF cranes situated portside 400 mt capacity each / 800 mt capacity combined Plus 1 NMF crane situated starboardside 80 mt capacity
<b>Container intake</b>	985 TEU nominal
<b>Deck strengths per sqm</b>	20.00 mt on tanktop 5.00 mt on tweendeck 5.00 mt on hatchcovers

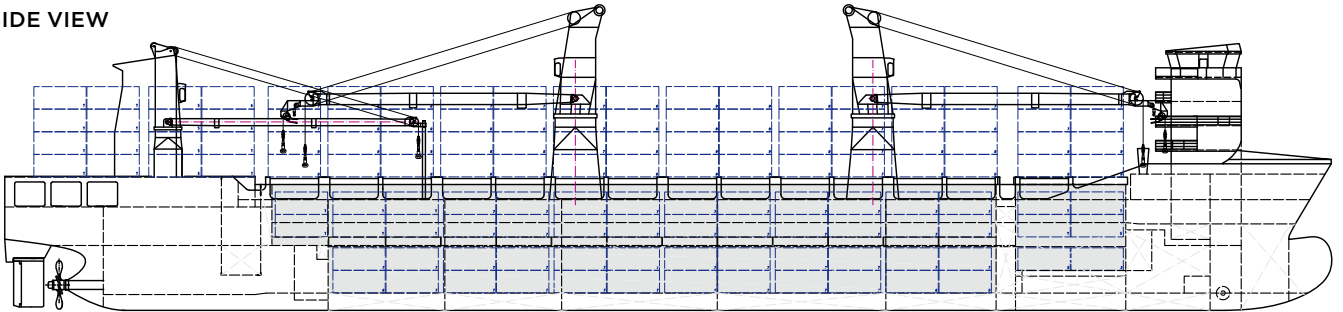
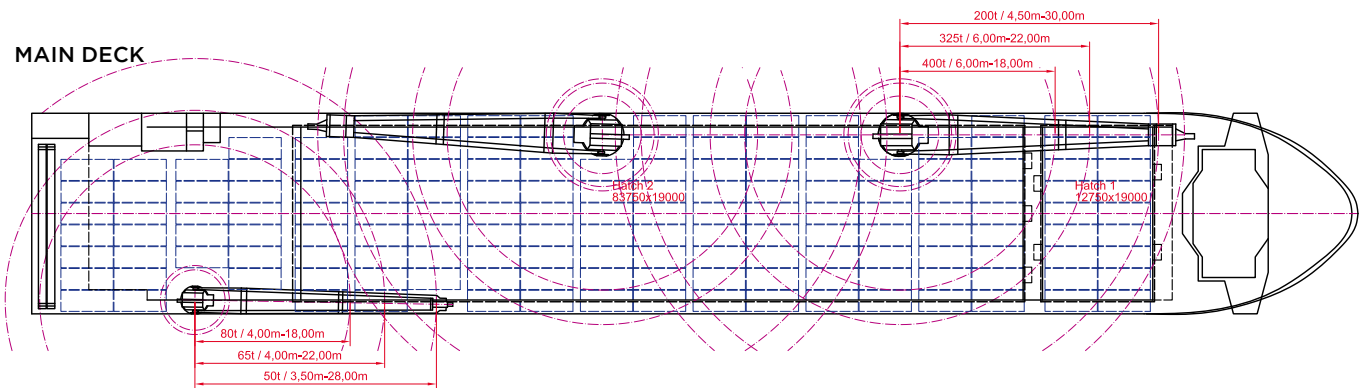
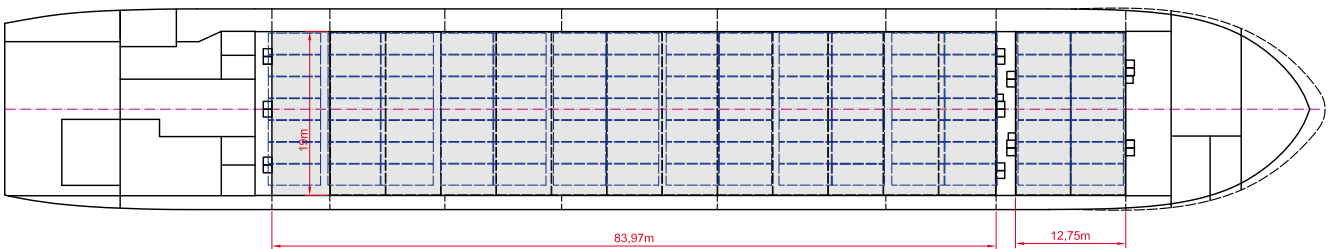
>>> see reverse side for further info/details

## SPECIAL EQUIPMENT/FEATURES

Speed and consumption figures are calculated basis maximum Beaufort 2, no swell and no adverse currents. Consumption data assumes shaft generator and reefer plugs disconnected. Vessel is burning fuels according to ISO 8217-2005. Intake is always subject to vessel's stability, trim, permissible weights and is subject to regulations of visibility. Lifting capacity of vessel's cranes is subject to vessel's stability and can depend on cargo/ballast on board. Container data as well as bale capacity assumes tweendeck ashore. All details including speed and consumption are given in good faith and are „about“ and are given without guarantee. They must not be used as basis for charterparties or contracts without BBC's explicit written authority.



BBC Amber	BBC Opal
BBC Amethyst	BBC Pearl
BBC Aquamarine	BBC Sapphire
BBC Citrine	BBC Ruby
BBC Coral	BBC Quartz
BBC Emerald	BBC Topaz
BBC Moonstone	BBC Tourmaline

**SIDE VIEW**

**MAIN DECK**

**TWEENDECK**

**HOLDS & DOUBLE BOTTOM**
